

Transparent and simple.

Our pricing model.

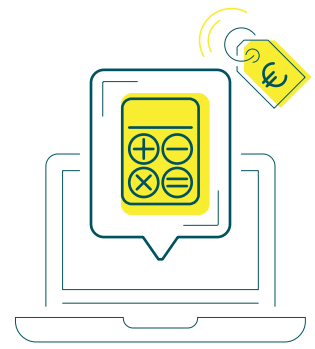
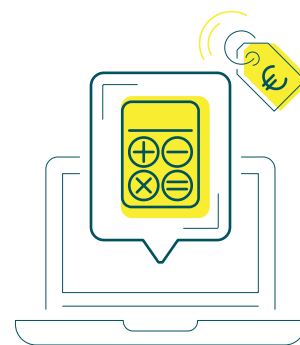


TABLE OF CONTENTS

| | |
|----------------------------|----|
| Compute Engine | 2 |
| Storage | 9 |
| Network..... | 10 |
| Security..... | 11 |
| Runtime..... | 11 |
| Database | 11 |
| Messaging | 18 |
| Logging & Monitoring | 19 |



Transparent and simple.

Our pricing model.

Compute Engine

| SERVER FLAVOR (TYP) | HARDWARE | OPERATING SYSTEM | vCPU | RAM (in GB) | BILLING | PRICE PER HOUR | PRICE INDICATION MONTH |
|---|----------|------------------|------|-------------|----------|-----------------|------------------------|
| Tiny Server-t1.1-EU01 | Intel | Linux | 1 | 0.5 | per hour | 0.00304791667 € | 2.19 € |
| Tiny Server-t1.2-EU01 | Intel | Linux | 1 | 1 | per hour | 0.00544975417 € | 3.92 € |
| Memory Optimized Server-m1.amphora-EU01 | Intel | Linux | 1 | 1 | per hour | 0.00563128194 € | 4.05 € |
| Compute Optimized Server-c1.1-EU01 | Intel | Linux | 1 | 2 | per hour | 0.01826770833 € | 13.15 € |
| Compute Optimized Server-c1.2-EU01 | Intel | Linux | 2 | 4 | per hour | 0.06065813333 € | 43.67 € |
| Compute Optimized Server-c1.3-EU01 | Intel | Linux | 4 | 8 | per hour | 0.13790247500 € | 99.29 € |
| Compute Optimized Server-c1.4-EU01 | Intel | Linux | 8 | 16 | per hour | 0.27580495000 € | 198.58 € |
| Compute Optimized Server-c1.5-EU01 | Intel | Linux | 16 | 32 | per hour | 0.55160990000 € | 397.16 € |
| General Purpose Server-g1.1-EU01 | Intel | Linux | 1 | 4 | per hour | 0.03791133333 € | 27.30 € |
| General Purpose Server-g1.2-EU01 | Intel | Linux | 2 | 8 | per hour | 0.07582266667 € | 54.59 € |
| General Purpose Server-g1.3-EU01 | Intel | Linux | 4 | 16 | per hour | 0.15164533333 € | 109.18 € |
| General Purpose Server-g1.4-EU01 | Intel | Linux | 8 | 32 | per hour | 0.30329066667 € | 218.37 € |
| General Purpose Server-g1.5-EU01 | Intel | Linux | 16 | 64 | per hour | 0.58130711111 € | 418.54 € |
| Memory Optimized Server-m1.1-EU01 | Intel | Linux | 1 | 8 | per hour | 0.04802102222 € | 34.58 € |
| Memory Optimized Server-m1.2-EU01 | Intel | Linux | 2 | 16 | per hour | 0.09604204444 € | 69.15 € |
| Memory Optimized Server-m1.3-EU01 | Intel | Linux | 4 | 32 | per hour | 0.19240001667 € | 138.53 € |
| Memory Optimized Server-m1.4-EU01 | Intel | Linux | 8 | 64 | per hour | 0.38416817778 € | 276.60 € |
| Memory Optimized Server-m1.5-EU01 | Intel | Linux | 16 | 128 | per hour | 0.76833635556 € | 553.20 € |
| Compute Optimized Server-s1.2-EU01 | Intel | Linux | 2 | 2 | per hour | 0.01654198825 € | 11.91 € |
| Compute Optimized Server-s1.3-EU01 | Intel | Linux | 4 | 4 | per hour | 0.09193498333 € | 66.19 € |
| Compute Optimized Server-s1.4-EU01 | Intel | Linux | 8 | 8 | per hour | 0.18386996667 € | 132.39 € |

All prices indicated are net list prices plus applicable taxes and duties. We reserve the right to amend or modify the price list at any time. The services will be invoiced to the originating cost centers per billing unit or part thereof. Per-month price indications are projected in all instances based on a hypothetical subscription period of 720 hours (30-day month). This price list shall not be construed as a legally binding offer on the part of Schwarz IT KG. Any individual agreement entered into is subject exclusively to the terms agreed by the Customer and Schwarz IT KG and the prices for the relevant service applicable as of the date on which the individual agreement is entered into.

| | | | | | | | |
|---|-------|-------|----|-----|----------|-----------------|------------|
| Compute Optimized Server-s1.5-EU01 | Intel | Linux | 16 | 16 | per hour | 0.36773993333 € | 264.77 € |
| Compute Optimized Server-s1.6-EU01 | Intel | Linux | 32 | 32 | per hour | 0.94630555556 € | 681.34 € |
| Memory Optimized Server-b1.1-EU01 | Intel | Linux | 1 | 16 | per hour | 0.10095003472 € | 72.68 € |
| Memory Optimized Server-b1.2-EU01 | Intel | Linux | 2 | 32 | per hour | 0.20190006944 € | 145.37 € |
| Memory Optimized Server-b1.3-EU01 | Intel | Linux | 4 | 64 | per hour | 0.40380013889 € | 290.74 € |
| Memory Optimized Server-b1.4-EU01 | Intel | Linux | 8 | 128 | per hour | 0.80760027778 € | 581.47 € |
| Tiny Server-t1.1-EU01-m | Intel | Linux | 1 | 0.5 | per hour | 0.01321946306 € | 9.52 € |
| Tiny Server-t1.2-EU01-m | Intel | Linux | 1 | 1 | per hour | 0.01531169500 € | 11.02 € |
| Memory Optimized Server-m1.amphora-EU01-m | Intel | Linux | 1 | 1 | per hour | 0.01549322278 € | 11.16 € |
| Compute Optimized Server-c1.1-EU01-m | Intel | Linux | 1 | 2 | per hour | 0.03653541667 € | 26.31 € |
| Compute Optimized Server-c1.2-EU01-m | Intel | Linux | 2 | 4 | per hour | 0.12131626667 € | 87.35 € |
| Compute Optimized Server-c1.3-EU01-m | Intel | Linux | 4 | 8 | per hour | 0.27580495000 € | 198.58 € |
| Compute Optimized Server-c1.4-EU01-m | Intel | Linux | 8 | 16 | per hour | 0.55160990000 € | 397.16 € |
| Compute Optimized Server-c1.5-EU01-m | Intel | Linux | 16 | 32 | per hour | 1.10321980000 € | 794.32 € |
| General Purpose Server-g1.1-EU01-m | Intel | Linux | 1 | 4 | per hour | 0.07582266667 € | 54.59 € |
| General Purpose Server-g1.2-EU01-m | Intel | Linux | 2 | 8 | per hour | 0.15164533333 € | 109.18 € |
| General Purpose Server-g1.3-EU01-m | Intel | Linux | 4 | 16 | per hour | 0.30329066667 € | 218.37 € |
| General Purpose Server-g1.4-EU01-m | Intel | Linux | 8 | 32 | per hour | 0.60658133333 € | 436.74 € |
| General Purpose Server-g1.5-EU01-m | Intel | Linux | 16 | 64 | per hour | 1.16261422222 € | 837.08 € |
| Memory Optimized Server-m1.1-EU01-m | Intel | Linux | 1 | 8 | per hour | 0.09604204444 € | 69.15 € |
| Memory Optimized Server-m1.2-EU01-m | Intel | Linux | 2 | 16 | per hour | 0.19208408889 € | 138.30 € |
| Memory Optimized Server-m1.3-EU01-m | Intel | Linux | 4 | 32 | per hour | 0.38480003333 € | 277.06 € |
| Memory Optimized Server-m1.4-EU01-m | Intel | Linux | 8 | 64 | per hour | 0.76833635556 € | 553.20 € |
| Memory Optimized Server-m1.5-EU01-m | Intel | Linux | 16 | 128 | per hour | 1.53667271111 € | 1,106.40 € |
| Compute Optimized Server-s1.2-EU01-m | Intel | Linux | 2 | 2 | per hour | 0.03308397650 € | 23.82 € |
| Compute Optimized Server-s1.3-EU01-m | Intel | Linux | 4 | 4 | per hour | 0.18386996667 € | 132.39 € |
| Compute Optimized Server-s1.4-EU01-m | Intel | Linux | 8 | 8 | per hour | 0.36773993333 € | 264.77 € |
| Compute Optimized Server-s1.5-EU01-m | Intel | Linux | 16 | 16 | per hour | 0.73547986667 € | 529.55 € |
| Compute Optimized Server-s1.6-EU01-m | Intel | Linux | 32 | 32 | per hour | 1.89261111111 € | 1,362.68 € |

All prices indicated are net list prices plus applicable taxes and duties. We reserve the right to amend or modify the price list at any time. The services will be invoiced to the originating cost centers per billing unit or part thereof. Per-month price indications are projected in all instances based on a hypothetical subscription period of 720 hours (30-day month). This price list shall not be construed as a legally binding offer on the part of Schwarz IT KG. Any individual agreement entered into is subject exclusively to the terms agreed by the Customer and Schwarz IT KG and the prices for the relevant service applicable as of the date on which the individual agreement is entered into.

| | | | | | | | |
|--|-------|----------------|----|-----|----------|-----------------|------------|
| Memory Optimized Server-b1.1-EU01-m | Intel | Linux | 1 | 16 | per hour | 0.20190006944 € | 145.37 € |
| Memory Optimized Server-b1.2-EU01-m | Intel | Linux | 2 | 32 | per hour | 0.40380013889 € | 290.74 € |
| Memory Optimized Server-b1.3-EU01-m | Intel | Linux | 4 | 64 | per hour | 0.80760027778 € | 581.47 € |
| Memory Optimized Server-b1.4-EU01-m | Intel | Linux | 8 | 128 | per hour | 1.61520055556 € | 1,162.94 € |
| Tiny Server-t1.1-Windows-Standard-EU01 | Intel | Windows Server | 1 | 0.5 | per hour | 0.04876166325 € | 35.11 € |
| Tiny Server-t1.2-Windows-Standard-EU01 | Intel | Windows Server | 1 | 1 | per hour | 0.04977315962 € | 35.84 € |
| Memory Optimized Server-m1.amphora-Windows-Standard-EU01 | Intel | Windows Server | 1 | 1 | per hour | 0.04995468740 € | 35.97 € |
| Compute Optimized Server-c1.1-Windows-Standard-EU01 | Intel | Windows Server | 1 | 2 | per hour | 0.05179615236 € | 37.29 € |
| Compute Optimized Server-c1.2-Windows-Standard-EU01 | Intel | Windows Server | 2 | 4 | per hour | 0.14414761120 € | 103.79 € |
| Compute Optimized Server-c1.3-Windows-Standard-EU01 | Intel | Windows Server | 4 | 8 | per hour | 0.26679166667 € | 192.09 € |
| Compute Optimized Server-c1.4-Windows-Standard-EU01 | Intel | Windows Server | 8 | 16 | per hour | 0.49025277778 € | 352.98 € |
| Compute Optimized Server-c1.5-Windows-Standard-EU01 | Intel | Windows Server | 16 | 32 | per hour | 0.93717500000 € | 674.77 € |
| General Purpose Server-g1.1-Windows-Standard-EU01 | Intel | Windows Server | 1 | 4 | per hour | 0.05558333333 € | 40.02 € |
| General Purpose Server-g1.2-Windows-Standard-EU01 | Intel | Windows Server | 2 | 8 | per hour | 0.16625000000 € | 119.70 € |
| General Purpose Server-g1.3-Windows-Standard-EU01 | Intel | Windows Server | 4 | 16 | per hour | 0.32986111111 € | 237.50 € |
| General Purpose Server-g1.4-Windows-Standard-EU01 | Intel | Windows Server | 8 | 32 | per hour | 0.62705277778 € | 451.48 € |
| General Purpose Server-g1.5-Windows-Standard-EU01 | Intel | Windows Server | 16 | 64 | per hour | 1.21077500000 € | 871.76 € |
| Memory Optimized Server-m1.1-Windows-Standard-EU01 | Intel | Windows Server | 1 | 8 | per hour | 0.09405989583 € | 67.72 € |
| Memory Optimized Server-m1.2-Windows-Standard-EU01 | Intel | Windows Server | 2 | 16 | per hour | 0.19324583333 € | 139.14 € |
| Memory Optimized Server-m1.3-Windows-Standard-EU01 | Intel | Windows Server | 4 | 32 | per hour | 0.35399375000 € | 254.88 € |
| Memory Optimized Server-m1.4-Windows-Standard-EU01 | Intel | Windows Server | 8 | 64 | per hour | 0.67548958333 € | 486.35 € |
| Memory Optimized Server-m1.5-Windows-Standard-EU01 | Intel | Windows Server | 16 | 128 | per hour | 1.44683680556 € | 1,041.72 € |
| Compute Optimized Server-s1.2-Windows-Standard-EU01 | Intel | Windows Server | 2 | 2 | per hour | 0.13605564023 € | 97.96 € |
| Compute Optimized Server-s1.3-Windows-Standard-EU01 | Intel | Windows Server | 4 | 4 | per hour | 0.23259166667 € | 167.47 € |
| Compute Optimized Server-s1.4-Windows-Standard-EU01 | Intel | Windows Server | 8 | 8 | per hour | 0.42185277778 € | 303.73 € |
| Compute Optimized Server-s1.5-Windows-Standard-EU01 | Intel | Windows Server | 16 | 16 | per hour | 0.80037500000 € | 576.27 € |

All prices indicated are net list prices plus applicable taxes and duties. We reserve the right to amend or modify the price list at any time. The services will be invoiced to the originating cost centers per billing unit or part thereof. Per-month price indications are projected in all instances based on a hypothetical subscription period of 720 hours (30-day month). This price list shall not be construed as a legally binding offer on the part of Schwarz IT KG. Any individual agreement entered into is subject exclusively to the terms agreed by the Customer and Schwarz IT KG and the prices for the relevant service applicable as of the date on which the individual agreement is entered into.

| | | | | | | | |
|--|-------|----------------|----|-----|----------|-----------------|------------|
| Compute Optimized Server-s1.6-Windows-Standard-EU01 | Intel | Windows Server | 32 | 32 | per hour | 1.55741944444 € | 1,121.34 € |
| Memory Optimized Server-b1.1-Windows-Standard-EU01 | Intel | Windows Server | 1 | 16 | per hour | 0.13680989583 € | 98.50 € |
| Memory Optimized Server-b1.2-Windows-Standard-EU01 | Intel | Windows Server | 2 | 32 | per hour | 0.29584583333 € | 213.01 € |
| Memory Optimized Server-b1.3-Windows-Standard-EU01 | Intel | Windows Server | 4 | 64 | per hour | 0.55919375000 € | 402.62 € |
| Memory Optimized Server-b1.4-Windows-Standard-EU01 | Intel | Windows Server | 8 | 128 | per hour | 1.08588958333 € | 781.84 € |
| Tiny Server-t1.1-Windows-Standard-EU01-m | Intel | Windows Server | 1 | 0.5 | per hour | 0.09752332649 € | 70.22 € |
| Tiny Server-t1.2-Windows-Standard-EU01-m | Intel | Windows Server | 1 | 1 | per hour | 0.09954631924 € | 71.67 € |
| Memory Optimized Server-m1.amphora-Windows-Standard-EU01-m | Intel | Windows Server | 1 | 1 | per hour | 0.09972965257 € | 71.81 € |
| Compute Optimized Server-c1.1-Windows-Standard-EU01-m | Intel | Windows Server | 1 | 2 | per hour | 0.10359230472 € | 74.59 € |
| Compute Optimized Server-c1.2-Windows-Standard-EU01-m | Intel | Windows Server | 2 | 4 | per hour | 0.28829522240 € | 207.57 € |
| Compute Optimized Server-c1.3-Windows-Standard-EU01-m | Intel | Windows Server | 4 | 8 | per hour | 0.53358333333 € | 384.18 € |
| Compute Optimized Server-c1.4-Windows-Standard-EU01-m | Intel | Windows Server | 8 | 16 | per hour | 0.98050555556 € | 705.96 € |
| Compute Optimized Server-c1.5-Windows-Standard-EU01-m | Intel | Windows Server | 16 | 32 | per hour | 1.87435000000 € | 1,349.53 € |
| General Purpose Server-g1.1-Windows-Standard-EU01-m | Intel | Windows Server | 1 | 4 | per hour | 0.11116666667 € | 80.04 € |
| General Purpose Server-g1.2-Windows-Standard-EU01-m | Intel | Windows Server | 2 | 8 | per hour | 0.33250000000 € | 239.40 € |
| General Purpose Server-g1.3-Windows-Standard-EU01-m | Intel | Windows Server | 4 | 16 | per hour | 0.65972222222 € | 475.00 € |
| General Purpose Server-g1.4-Windows-Standard-EU01-m | Intel | Windows Server | 8 | 32 | per hour | 1.25410555556 € | 902.96 € |
| General Purpose Server-g1.5-Windows-Standard-EU01-m | Intel | Windows Server | 16 | 64 | per hour | 2.42155000000 € | 1,743.52 € |
| Memory Optimized Server-m1.1-Windows-Standard-EU01-m | Intel | Windows Server | 1 | 8 | per hour | 0.18811979167 € | 135.45 € |
| Memory Optimized Server-m1.2-Windows-Standard-EU01-m | Intel | Windows Server | 2 | 16 | per hour | 0.38649166667 € | 278.27 € |
| Memory Optimized Server-m1.3-Windows-Standard-EU01-m | Intel | Windows Server | 4 | 32 | per hour | 0.70798750000 € | 509.75 € |
| Memory Optimized Server-m1.4-Windows-Standard-EU01-m | Intel | Windows Server | 8 | 64 | per hour | 1.35097916667 € | 972.71 € |
| Memory Optimized Server-m1.5-Windows-Standard-EU01-m | Intel | Windows Server | 16 | 128 | per hour | 2.89367361111 € | 2,083.44 € |
| Compute Optimized Server-s1.2-Windows-Standard-EU01-m | Intel | Windows Server | 2 | 2 | per hour | 0.27211128046 € | 195.92 € |
| Compute Optimized Server-s1.3-Windows-Standard-EU01-m | Intel | Windows Server | 4 | 4 | per hour | 0.46518333333 € | 334.93 € |
| Compute Optimized Server-s1.4-Windows-Standard-EU01-m | Intel | Windows Server | 8 | 8 | per hour | 0.84370555556 € | 607.47 € |

All prices indicated are net list prices plus applicable taxes and duties. We reserve the right to amend or modify the price list at any time. The services will be invoiced to the originating cost centers per billing unit or part thereof. Per-month price indications are projected in all instances based on a hypothetical subscription period of 720 hours (30-day month). This price list shall not be construed as a legally binding offer on the part of Schwarz IT KG. Any individual agreement entered into is subject exclusively to the terms agreed by the Customer and Schwarz IT KG and the prices for the relevant service applicable as of the date on which the individual agreement is entered into.

| | | | | | | | |
|---|-------|----------------|----|-----|----------|-----------------|------------|
| Compute Optimized Server-s1.5-Windows-Standard-EU01-m | Intel | Windows Server | 16 | 16 | per hour | 1.60075000000 € | 1,152.54 € |
| Compute Optimized Server-s1.6-Windows-Standard-EU01-m | Intel | Windows Server | 32 | 32 | per hour | 3.11483888889 € | 2,242.68 € |
| Memory Optimized Server-b1.1-Windows-Standard-EU01-m | Intel | Windows Server | 1 | 16 | per hour | 0.27361979167 € | 197.01 € |
| Memory Optimized Server-b1.2-Windows-Standard-EU01-m | Intel | Windows Server | 2 | 32 | per hour | 0.59169166667 € | 426.02 € |
| Memory Optimized Server-b1.3-Windows-Standard-EU01-m | Intel | Windows Server | 4 | 64 | per hour | 1.11838750000 € | 805.24 € |
| Memory Optimized Server-b1.4-Windows-Standard-EU01-m | Intel | Windows Server | 8 | 128 | per hour | 2.17177916667 € | 1,563.68 € |
| Compute Optimized Server-s1a.2d-EU01 | AMD | Linux | 2 | 2 | per hour | 0.07965277778 € | 57.35 € |
| Compute Optimized Server-s1a.4d-EU01 | AMD | Linux | 4 | 4 | per hour | 0.15930555556 € | 114.70 € |
| Compute Optimized Server-s1a.8d-EU01 | AMD | Linux | 8 | 8 | per hour | 0.31862500000 € | 229.41 € |
| Compute Optimized Server-s1a.16d-EU01 | AMD | Linux | 16 | 16 | per hour | 0.63722222222 € | 458.80 € |
| Compute Optimized Server-s1a.32d-EU01 | AMD | Linux | 32 | 32 | per hour | 1.27445833333 € | 917.61 € |
| Compute Optimized Server-s1a.60d-EU01 | AMD | Linux | 60 | 60 | per hour | 2.54891666667 € | 1,835.22 € |
| Compute Optimized Server-c1a.1d-EU01 | AMD | Linux | 1 | 2 | per hour | 0.04676388889 € | 33.67 € |
| Compute Optimized Server-c1a.2d-EU01 | AMD | Linux | 2 | 4 | per hour | 0.09352777778 € | 67.34 € |
| Compute Optimized Server-c1a.4d-EU01 | AMD | Linux | 4 | 8 | per hour | 0.18704166667 € | 134.67 € |
| Compute Optimized Server-c1a.8d-EU01 | AMD | Linux | 8 | 16 | per hour | 0.37408333333 € | 269.34 € |
| Compute Optimized Server-c1a.16d-EU01 | AMD | Linux | 16 | 32 | per hour | 0.74818055556 € | 538.69 € |
| General Purpose Server-g1a.1d-EU01 | AMD | Linux | 1 | 4 | per hour | 0.04916666667 € | 35.40 € |
| General Purpose Server-g1a.2d-EU01 | AMD | Linux | 2 | 8 | per hour | 0.09831944444 € | 70.79 € |
| General Purpose Server-g1a.4d-EU01 | AMD | Linux | 4 | 16 | per hour | 0.19665277778 € | 141.59 € |
| General Purpose Server-g1a.8d-EU01 | AMD | Linux | 8 | 32 | per hour | 0.39330555556 € | 283.18 € |
| General Purpose Server-g1a.16d-EU01 | AMD | Linux | 16 | 64 | per hour | 0.78659722222 € | 566.35 € |
| General Purpose Server-g1a.32d-EU01 | AMD | Linux | 32 | 128 | per hour | 1.57319444444 € | 1,132.70 € |
| General Purpose Server-g1a.60d-EU01 | AMD | Linux | 60 | 238 | per hour | 3.14640277778 € | 2,265.41 € |
| Memory Optimized Server-m1a.1d-EU01 | AMD | Linux | 1 | 8 | per hour | 0.06970833333 € | 50.19 € |
| Memory Optimized Server-m1a.2d-EU01 | AMD | Linux | 2 | 16 | per hour | 0.13940277778 € | 100.37 € |
| Memory Optimized Server-m1a.4d-EU01 | AMD | Linux | 4 | 32 | per hour | 0.27881944444 € | 200.75 € |

All prices indicated are net list prices plus applicable taxes and duties. We reserve the right to amend or modify the price list at any time. The services will be invoiced to the originating cost centers per billing unit or part thereof. Per-month price indications are projected in all instances based on a hypothetical subscription period of 720 hours (30-day month). This price list shall not be construed as a legally binding offer on the part of Schwarz IT KG. Any individual agreement entered into is subject exclusively to the terms agreed by the Customer and Schwarz IT KG and the prices for the relevant service applicable as of the date on which the individual agreement is entered into.

| | | | | | | | |
|---|-----|-------|-----|------|----------|------------------|-------------|
| Memory Optimized Server-m1a.8d-EU01 | AMD | Linux | 8 | 64 | per hour | 0.557722222222 € | 401.56 € |
| Memory Optimized Server-m1a.16d-EU01 | AMD | Linux | 16 | 128 | per hour | 1.11529166667 € | 803.01 € |
| Memory Optimized Server-m1a.32d-EU01 | AMD | Linux | 32 | 238 | per hour | 2.23058333333 € | 1,606.02 € |
| Memory Optimized Server-m1a.60d-EU01 | AMD | Linux | 60 | 476 | per hour | 4.46116666667 € | 3,212.04 € |
| Memory Optimized Server-m1a.120d-EU01 | AMD | Linux | 120 | 952 | per hour | 8.58009722222 € | 6,177.67 € |
| Memory Optimized Server-b1a.1d-EU01 | AMD | Linux | 1 | 16 | per hour | 0.13087500000 € | 94.23 € |
| Memory Optimized Server-b1a.2d-EU01 | AMD | Linux | 2 | 32 | per hour | 0.26175000000 € | 188.46 € |
| Memory Optimized Server-b1a.4d-EU01 | AMD | Linux | 4 | 64 | per hour | 0.52356944444 € | 376.97 € |
| Memory Optimized Server-b1a.8d-EU01 | AMD | Linux | 8 | 128 | per hour | 1.04701388889 € | 753.85 € |
| Memory Optimized Server-b1a.16d-EU01 | AMD | Linux | 16 | 238 | per hour | 2.09402777778 € | 1,507.70 € |
| Memory Optimized Server-b1a.32d-EU01 | AMD | Linux | 32 | 476 | per hour | 4.18802777778 € | 3,015.38 € |
| Memory Optimized Server-b1a.48d-EU01 | AMD | Linux | 48 | 768 | per hour | 6.28204166667 € | 4,523.07 € |
| Memory Optimized Server-b1a.60d-EU01 | AMD | Linux | 60 | 952 | per hour | 8.05477777778 € | 5,799.44 € |
| Memory Optimized Server-b1a.120d-EU01 | AMD | Linux | 120 | 1904 | per hour | 16.75212500000 € | 12,061.53 € |
| Compute Optimized Server-s1a.2d-EU01-m | AMD | Linux | 2 | 2 | per hour | 0.15930555556 € | 114.70 € |
| Compute Optimized Server-s1a.4d-EU01-m | AMD | Linux | 4 | 4 | per hour | 0.31862500000 € | 229.41 € |
| Compute Optimized Server-s1a.8d-EU01-m | AMD | Linux | 8 | 8 | per hour | 0.63723611111 € | 458.81 € |
| Compute Optimized Server-s1a.16d-EU01-m | AMD | Linux | 16 | 16 | per hour | 1.27445833333 € | 917.61 € |
| Compute Optimized Server-s1a.32d-EU01-m | AMD | Linux | 32 | 32 | per hour | 2.54890277778 € | 1,835.21 € |
| Compute Optimized Server-s1a.60d-EU01-m | AMD | Linux | 60 | 60 | per hour | 5.09783333333 € | 3,670.44 € |
| Compute Optimized Server-c1a.1d-EU01-m | AMD | Linux | 1 | 2 | per hour | 0.09352777778 € | 67.34 € |
| Compute Optimized Server-c1a.2d-EU01-m | AMD | Linux | 2 | 4 | per hour | 0.18704166667 € | 134.67 € |
| Compute Optimized Server-c1a.4d-EU01-m | AMD | Linux | 4 | 8 | per hour | 0.37408333333 € | 269.34 € |
| Compute Optimized Server-c1a.8d-EU01-m | AMD | Linux | 8 | 16 | per hour | 0.74818055556 € | 538.69 € |
| Compute Optimized Server-c1a.16d-EU01-m | AMD | Linux | 16 | 32 | per hour | 1.49636111111 € | 1,077.38 € |
| General Purpose Server-g1a.1d-EU01-m | AMD | Linux | 1 | 4 | per hour | 0.09831944444 € | 70.79 € |

All prices indicated are net list prices plus applicable taxes and duties. We reserve the right to amend or modify the price list at any time. The services will be invoiced to the originating cost centers per billing unit or part thereof. Per-month price indications are projected in all instances based on a hypothetical subscription period of 720 hours (30-day month). This price list shall not be construed as a legally binding offer on the part of Schwarz IT KG. Any individual agreement entered into is subject exclusively to the terms agreed by the Customer and Schwarz IT KG and the prices for the relevant service applicable as of the date on which the individual agreement is entered into.

| | | | | | | | |
|---|-----|------------------------|-----|------|-----------------|------------------|-------------|
| General Purpose Server-g1a.2d-EU01-m | AMD | Linux | 2 | 8 | per hour | 0.19665277778 € | 141.59 € |
| General Purpose Server-g1a.4d-EU01-m | AMD | Linux | 4 | 16 | per hour | 0.39330555556 € | 283.18 € |
| General Purpose Server-g1a.8d-EU01-m | AMD | Linux | 8 | 32 | per hour | 0.78659722222 € | 566.35 € |
| General Purpose Server-g1a.16d-EU01-m | AMD | Linux | 16 | 64 | per hour | 1.57319444444 € | 1,132.70 € |
| General Purpose Server-g1a.32d-EU01-m | AMD | Linux | 32 | 128 | per hour | 3.14640277778 € | 2,265.41 € |
| General Purpose Server-g1a.60d-EU01-m | AMD | Linux | 60 | 238 | per hour | 6.29280555556 € | 4,530.82 € |
| Memory Optimized Server-m1a.1d-EU01-m | AMD | Linux | 1 | 8 | per hour | 0.13940277778 € | 100.37 € |
| Memory Optimized Server-m1a.2d-EU01-m | AMD | Linux | 2 | 16 | per hour | 0.27880555556 € | 200.74 € |
| Memory Optimized Server-m1a.4d-EU01-m | AMD | Linux | 4 | 32 | per hour | 0.55765277778 € | 401.51 € |
| Memory Optimized Server-m1a.8d-EU01-m | AMD | Linux | 8 | 64 | per hour | 1.11543055556 € | 803.11 € |
| Memory Optimized Server-m1a.16d-EU01-m | AMD | Linux | 16 | 128 | per hour | 2.23058333333 € | 1,606.02 € |
| Memory Optimized Server-m1a.32d-EU01-m | AMD | Linux | 32 | 238 | per hour | 4.46116666667 € | 3,212.04 € |
| Memory Optimized Server-m1a.60d-EU01-m | AMD | Linux | 60 | 476 | per hour | 8.92233333333 € | 6,424.08 € |
| Memory Optimized Server-m1a.120d-EU01-m | AMD | Linux | 120 | 952 | per hour | 17.16018055556 € | 12,355.33 € |
| Memory Optimized Server-b1a.1d-EU01-m | AMD | Linux | 1 | 16 | per hour | 0.26175000000 € | 188.46 € |
| Memory Optimized Server-b1a.2d-EU01-m | AMD | Linux | 2 | 32 | per hour | 0.52350000000 € | 376.92 € |
| Memory Optimized Server-b1a.4d-EU01-m | AMD | Linux | 4 | 64 | per hour | 1.04713888889 € | 753.94 € |
| Memory Optimized Server-b1a.8d-EU01-m | AMD | Linux | 8 | 128 | per hour | 2.09402777778 € | 1,507.70 € |
| Memory Optimized Server-b1a.16d-EU01-m | AMD | Linux | 16 | 238 | per hour | 4.18805555556 € | 3,015.40 € |
| Memory Optimized Server-b1a.32d-EU01-m | AMD | Linux | 32 | 476 | per hour | 8.37606944444 € | 6,030.77 € |
| Memory Optimized Server-b1a.48d-EU01-m | AMD | Linux | 48 | 768 | per hour | 12.56409722222 € | 9,046.15 € |
| Memory Optimized Server-b1a.60d-EU01-m | AMD | Linux | 60 | 952 | per hour | 16.10955555556 € | 11,598.88 € |
| Memory Optimized Server-b1a.120d-EU01-m | AMD | Linux | 120 | 1904 | per hour | 33.50425000000 € | 24,123.06 € |
| Windows Server Remote Desktop Services User SAL | | RDS for Windows Server | - | - | per user/month | - | 10.44 € |
| Server Backup Management-EU01 | - | - | - | - | per server/hour | 0.00640277778 € | 4.61 € |
| Server Update Management-EU01 | - | - | - | - | per server/hour | 0.00500065954 € | 3.60 € |

All prices indicated are net list prices plus applicable taxes and duties. We reserve the right to amend or modify the price list at any time. The services will be invoiced to the originating cost centers per billing unit or part thereof. Per-month price indications are projected in all instances based on a hypothetical subscription period of 720 hours (30-day month). This price list shall not be construed as a legally binding offer on the part of Schwarz IT KG. Any individual agreement entered into is subject exclusively to the terms agreed by the Customer and Schwarz IT KG and the prices for the relevant service applicable as of the date on which the individual agreement is entered into.

| | | | | | | | |
|-------------------------------------|-----|-------|----|-----|----------|-----------------|----------|
| General Purpose Server-g1r.1d-EU01 | ARM | Linux | 1 | 4 | per hour | 0.04035695000 € | 29.06 € |
| General Purpose Server-g1r.2d-EU01 | ARM | Linux | 2 | 8 | per hour | 0.08071390000 € | 58.11 € |
| General Purpose Server-g1r.4d-EU01 | ARM | Linux | 4 | 16 | per hour | 0.16142780000 € | 116.23 € |
| General Purpose Server-g1r.8d-EU01 | ARM | Linux | 8 | 32 | per hour | 0.32285560000 € | 232.46 € |
| General Purpose Server-g1r.16d-EU01 | ARM | Linux | 16 | 64 | per hour | 0.64571120000 € | 464.91 € |
| General Purpose Server-g1r.30d-EU01 | ARM | Linux | 30 | 120 | per hour | 1.20985888000 € | 871.10 € |

Storage

| STORAGE SERVICE (TYP) | MAX. IOPS | MAX. THROUGHPUT (in Mbyte/s) | BILLING | PRICE PER HOUR | PRICE INDICATION MONTH |
|---|-----------|------------------------------|---------------|-----------------|------------------------|
| Object Storage Premium-EU01 | - | - | per GB/hour | 0.00003697772 € | 0.03 € |
| Image Storage-EU01-m | - | - | per GB/hour | 0.00013360960 € | 0.10 € |
| Block Storage for disk volumes Premium-Capacity-EU01 | - | - | per GB/hour | 0.00009076380 € | 0.07 € |
| Block Storage for snapshots Premium-EU01 | - | - | per GB/hour | 0.00002342292 € | 0.02 € |
| Block Storage for disk volumes Premium-Performance 0-EU01 | 120 | 25 | per disk/hour | 0.00390170472 € | 2.81 € |
| Block Storage for disk volumes Premium-Performance 1-EU01 | 500 | 50 | per disk/hour | 0.01490234443 € | 10.73 € |
| Block Storage for disk volumes Premium-Performance 2-EU01 | 1000 | 100 | per disk/hour | 0.02709517169 € | 19.51 € |
| Block Storage for disk volumes Premium-Performance 4-EU01 | 2000 | 150 | per disk/hour | 0.04877130904 € | 35.12 € |
| Block Storage for disk volumes Premium-Performance 6-EU01 | 5000 | 200 | per disk/hour | 0.10838068676 € | 78.03 € |
| Block Storage for disk volumes Premium-Performance 8-EU01 | 10000 | 250 | per disk/hour | 0.21405185636 € | 154.12 € |
| Block Storage for disk volumes Premium-Performance 10-EU01 | 15000 | 300 | per disk/hour | 0.31294923303 € | 225.32 € |
| Block Storage for disk volumes Premium-Performance 12-EU01 | 20000 | 350 | per disk/hour | 0.40642757536 € | 292.63 € |
| Block Storage for disk volumes Premium-Capacity-EU01-m | - | - | per GB/hour | 0.00013360960 € | 0.10 € |
| Block Storage for snapshots Premium-EU01-m | - | - | per GB/hour | 0.00003447990 € | 0.02 € |
| Block Storage for incremental backups Premium-EU01-m | - | - | per GB/hour | 0.00000371397 € | 0.00 € |
| Block Storage for backups Premium-EU01-m | - | - | per GB/hour | 0.00003713967 € | 0.03 € |
| Block Storage for disk volumes Premium-Performance 0-EU01-m | 120 | 25 | per disk/hour | 0.00780340945 € | 5.62 € |
| Block Storage for disk volumes Premium-Performance 1-EU01-m | 500 | 50 | per disk/hour | 0.02980468886 € | 21.46 € |
| Block Storage for disk volumes Premium-Performance 2-EU01-m | 1000 | 100 | per disk/hour | 0.05419034338 € | 39.02 € |
| Block Storage for disk volumes Premium-Performance 4-EU01-m | 2000 | 150 | per disk/hour | 0.09754261809 € | 70.23 € |

All prices indicated are net list prices plus applicable taxes and duties. We reserve the right to amend or modify the price list at any time. The services will be invoiced to the originating cost centers per billing unit or part thereof. Per-month price indications are projected in all instances based on a hypothetical subscription period of 720 hours (30-day month). This price list shall not be construed as a legally binding offer on the part of Schwarz IT KG. Any individual agreement entered into is subject exclusively to the terms agreed by the Customer and Schwarz IT KG and the prices for the relevant service applicable as of the date on which the individual agreement is entered into.

| | | | | | |
|--|-------|-----|---------------|-----------------|----------|
| Block Storage for disk volumes Premium-Performance 6-EU01-m | 5000 | 200 | per disk/hour | 0.21676137353 € | 156.07 € |
| Block Storage for disk volumes Premium-Performance 8-EU01-m | 10000 | 250 | per disk/hour | 0.42810371272 € | 308.23 € |
| Block Storage for disk volumes Premium-Performance 10-EU01-m | 15000 | 300 | per disk/hour | 0.62589846606 € | 450.65 € |
| Block Storage for disk volumes Premium-Performance 12-EU01-m | 20000 | 350 | per disk/hour | 0.81285515073 € | 585.26 € |
| Block Storage for MongoDB Premium-Capacity-EU01 | - | - | per GB/hour | 0.00009076380 € | 0.07 € |
| Block Storage for MongoDB Premium-Performance 2-EU01 | 1000 | 100 | per disk/hour | 0.02709517169 € | 19.51 € |
| Block Storage for MongoDB Premium-Performance 4-EU01 | 2000 | 150 | per disk/hour | 0.04877130904 € | 35.12 € |
| Block Storage for MongoDB Premium-Performance 6-EU01 | 5000 | 200 | per disk/hour | 0.10838068676 € | 78.03 € |
| Block Storage for MongoDB Premium-Performance 8-EU01 | 10000 | 250 | per disk/hour | 0.21405185636 € | 154.12 € |
| Block Storage for MongoDB Premium-Performance 10-EU01 | 15000 | 300 | per disk/hour | 0.31294923303 € | 225.32 € |
| Block Storage for MongoDB Premium-Performance 12-EU01 | 20000 | 350 | per disk/hour | 0.40642757536 € | 292.63 € |
| Backup Storage for MongoDB Premium-EU01 | - | - | per GB/hour | 0.00003697772 € | 0.03 € |
| Block Storage for PostgreSQL Premium-Capacity-EU01-m | - | - | per GB/hour | 0.00013360960 € | 0.10 € |
| Block Storage for PostgreSQL Premium-Performance 2-EU01-m | 1000 | 100 | per disk/hour | 0.05419034338 € | 39.02 € |
| Block Storage for PostgreSQL Premium-Performance 4-EU01-m | 2000 | 150 | per disk/hour | 0.09754261809 € | 70.23 € |
| Block Storage for PostgreSQL Premium-Performance 6-EU01-m | 5000 | 200 | per disk/hour | 0.21676137353 € | 156.07 € |
| Block Storage for PostgreSQL Premium-Performance 8-EU01-m | 10000 | 250 | per disk/hour | 0.42810371272 € | 308.23 € |
| Block Storage for PostgreSQL Premium-Performance 10-EU01-m | 15000 | 300 | per disk/hour | 0.62589846606 € | 450.65 € |
| Block Storage for PostgreSQL Premium-Performance 12-EU01-m | 20000 | 350 | per disk/hour | 0.81285515073 € | 585.26 € |
| Backup Storage for PostgreSQL Premium-EU01 | - | - | per GB/hour | 0.00003697772 € | 0.03 € |

Network

| NETWORK SERVICE (TYP) | RECORD LIMIT PER ZONE | BILLING | PRICE PER HOUR | PRICE INDICATION MONTH |
|-----------------------|-----------------------|----------|-----------------|------------------------|
| Floating-IP-EU01 | - | per hour | 0.00405555556 € | 2.92 € |
| Router-IP-EU01 | - | per hour | 0.00405555556 € | 2.92 € |
| DNS-100-EU01 | 100 | per hour | 0.00266275276 € | 1.92 € |
| DNS-1000-EU01 | 1000 | per hour | 0.00428964699 € | 3.09 € |
| DNS-10000-EU01 | 10000 | per hour | 0.02055858931 € | 14.80 € |

* Minimum order quantity for the Secretes Manager: 50 Secrets per service. Each additional secret is charged according to the individual unit price per hour.

All prices indicated are net list prices plus applicable taxes and duties. We reserve the right to amend or modify the price list at any time. The services will be invoiced to the originating cost centers per billing unit or part thereof. Per-month price indications are projected in all instances based on a hypothetical subscription period of 720 hours (30-day month). This price list shall not be construed as a legally binding offer on the part of Schwarz IT KG. Any individual agreement entered into is subject exclusively to the terms agreed by the Customer and Schwarz IT KG and the prices for the relevant service applicable as of the date on which the individual agreement is entered into.

Security

| SERVICE (TYP) | BILLING | PRICE PER HOUR | PRICE INDICATION MONTH |
|-------------------------------|-----------------|-----------------|------------------------|
| Secrets Manager-Secrets-EU01* | per secret/hour | 0.00102777778 € | 0.74 € |

Runtime

| SERVICE (TYP) | BILLING | PRICE PER HOUR | PRICE INDICATION MONTH |
|---|-------------------------|-----------------|------------------------|
| Kubernetes Engine-Cluster Management-EU01 | pro Cluster/Stunde | 0.09959511998 € | 71.71 € |
| Cloud Foundry App Usage-EU01 | pro Megabyte RAM/Stunde | 0.00004093510 € | 0.03 € |

Database

| SERVICE (TYP) | NUMBER NODE | DISK STORAGE per node (in GB) | BILLING | PRICE PER HOUR | PRICE INDICATION MONTH |
|--|-------------|-------------------------------|----------|-----------------|------------------------|
| MariaDB until version 10.4 | | | | | |
| MariaDB-c1.5-Extra Large Replica-EU01 | 3 | 500 | per hour | 0.75502559924 € | 543.62 € |
| MariaDB-g1.3-Large Replica-EU01 | 3 | 100 | per hour | 0.41421986563 € | 298.24 € |
| MariaDB-g1.2-Medium Replica-EU01 | 3 | 50 | per hour | 0.29292312923 € | 210.90 € |
| MariaDB-c1.2-Small Replica-EU01 | 3 | 10 | per hour | 0.21671102185 € | 156.03 € |
| MariaDB-g1.2-Medium Single Instance-EU01 | 1 | 50 | per hour | 0.12623899372 € | 90.89 € |
| MariaDB-c1.2-Small Single Instance-EU01 | 1 | 10 | per hour | 0.11513393325 € | 82.90 € |
| MariaDB version 10.4 and 10.6 | | | | | |
| MariaDB-1.4.10-Single-EU01 | 1 | 10 | per hour | 0.09995833333 € | 71.97 € |
| MariaDB-2.4.10-Single-EU01 | 1 | 10 | per hour | 0.10302777778 € | 74.18 € |
| MariaDB-2.8.50-Single-EU01 | 1 | 50 | per hour | 0.11844444444 € | 85.28 € |
| MariaDB-4.8.50-Single-EU01 | 1 | 50 | per hour | 0.14566666667 € | 104.88 € |
| MariaDB-1.2.10-Replica-EU01 | 3 | 10 | per hour | 0.17154166667 € | 123.51 € |
| MariaDB-1.4.10-Replica-EU01 | 3 | 10 | per hour | 0.18020833333 € | 129.75 € |
| MariaDB-1.4.50-Replica-EU01 | 3 | 50 | per hour | 0.20909722222 € | 150.55 € |
| MariaDB-2.4.10-Replica-EU01 | 3 | 10 | per hour | 0.18943055556 € | 136.39 € |
| MariaDB-2.4.50-Replica-EU01 | 3 | 50 | per hour | 0.21831944444 € | 157.19 € |
| MariaDB-2.8.10-Replica-EU01 | 3 | 10 | per hour | 0.20676388889 € | 148.87 € |
| MariaDB-2.8.50-Replica-EU01 | 3 | 50 | per hour | 0.25876388889 € | 186.31 € |
| MariaDB-2.8.100-Replica-EU01 | 3 | 100 | per hour | 0.32912500000 € | 236.97 € |
| MariaDB-2.8.250-Replica-EU01 | 3 | 250 | per hour | 0.40565277778 € | 292.07 € |

* Minimum order quantity for the Secrets Manager: 50 Secrets per service. Each additional secret is charged according to the individual unit price per hour.

All prices indicated are net list prices plus applicable taxes and duties. We reserve the right to amend or modify the price list at any time. The services will be invoiced to the originating cost centers per billing unit or part thereof. Per-month price indications are projected in all instances based on a hypothetical subscription period of 720 hours (30-day month). This price list shall not be construed as a legally binding offer on the part of Schwarz IT KG. Any individual agreement entered into is subject exclusively to the terms agreed by the Customer and Schwarz IT KG and the prices for the relevant service applicable as of the date on which the individual agreement is entered into.

| | | | | | |
|--|---|------|----------|-----------------|------------|
| MariaDB-4.8.10-Replica-EU01 | 3 | 10 | per hour | 0.39087500000 € | 281.43 € |
| MariaDB-4.8.50-Replica-EU01 | 3 | 50 | per hour | 0.43347222222 € | 312.10 € |
| MariaDB-4.8.100-Replica-EU01 | 3 | 100 | per hour | 0.50169444444 € | 361.22 € |
| MariaDB-4.8.250-Replica-EU01 | 3 | 250 | per hour | 0.70633333333 € | 508.56 € |
| MariaDB-4.16.50-Replica-EU01 | 3 | 50 | per hour | 0.44716666667 € | 321.96 € |
| MariaDB-4.16.100-Replica-EU01 | 3 | 100 | per hour | 0.51754166667 € | 372.63 € |
| MariaDB-4.16.250-Replica-EU01 | 3 | 250 | per hour | 0.71254166667 € | 513.03 € |
| MariaDB-4.16.500-Replica-EU01 | 3 | 500 | per hour | 0.79934722222 € | 575.53 € |
| MariaDB-8.16.50-Replica-EU01 | 3 | 50 | per hour | 0.82395833333 € | 593.25 € |
| MariaDB-8.16.100-Replica-EU01 | 3 | 100 | per hour | 0.86695833333 € | 624.21 € |
| MariaDB-8.16.250-Replica-EU01 | 3 | 250 | per hour | 1.07159722222 € | 771.55 € |
| MariaDB-8.16.500-Replica-EU01 | 3 | 500 | per hour | 1.41268055556 € | 1,017.13 € |
| MariaDB-8.32.100-Replica-EU01 | 3 | 100 | per hour | 0.89433333333 € | 643.92 € |
| MariaDB-8.32.250-Replica-EU01 | 3 | 250 | per hour | 1.10544444444 € | 795.92 € |
| MariaDB-8.32.500-Replica-EU01 | 3 | 500 | per hour | 1.44900000000 € | 1,043.28 € |
| MariaDB-8.32.1000-Replica-EU01 | 3 | 1000 | per hour | 1.62263888889 € | 1,168.30 € |
| MariaDB-16.32.100-Replica-EU01 | 3 | 100 | per hour | 1.64791666667 € | 1,186.50 € |
| MariaDB-16.32.250-Replica-EU01 | 3 | 250 | per hour | 1.85901388889 € | 1,338.49 € |
| MariaDB-16.32.500-Replica-EU01 | 3 | 500 | per hour | 2.12470833333 € | 1,529.79 € |
| MariaDB-16.32.1000-Replica-EU01 | 3 | 1000 | per hour | 2.78838888889 € | 2,007.64 € |
| MariaDB-16.64.500-Replica-EU01 | 3 | 500 | per hour | 2.19180555556 € | 1,578.10 € |
| MariaDB-16.64.1000-Replica-EU01 | 3 | 1000 | per hour | 2.87644444444 € | 2,071.04 € |
| MariaDB - High Performance | | | | | |
| MariaDB-4.8.250-Replica-HiPerf-EU01 | 3 | 250 | per hour | 0.84053666667 € | 605,19 € |
| MariaDB-8.16.500-Replica-HiPerf-EU01 | 3 | 500 | per hour | 1.68108986111 € | 1,210.38 € |
| MariaDB-16.32.500-Replica-HiPerf-EU01 | 3 | 500 | per hour | 2.52840291667 € | 1,820.45 € |
| MariaDB-16.32.1000-Replica-HiPerf-EU01 | 3 | 1000 | per hour | 3.31818277778 € | 2,389.09 € |
| MariaDB-4.16.500-Replica-HiPerf-EU01 | 3 | 500 | per hour | 0.95122319444 € | 684.88 € |
| MariaDB-8.32.1000-Replica-HiPerf-EU01 | 3 | 1000 | per hour | 1.93094027778 € | 1,390.28 € |
| MariaDB-16.64.1000-Replica-HiPerf-EU01 | 3 | 1000 | per hour | 3.42296888889 € | 2,464.54 € |
| Redis | | | | | |
| Redis-g1.3-Large Replica-EU01 | 3 | 100 | per hour | 0.41421986563 € | 298.24 € |
| Redis-g1.2-Medium Replica-EU01 | 3 | 50 | per hour | 0.29292312923 € | 210.90 € |
| Redis-c1.2-Small Replica-EU01 | 3 | 10 | per hour | 0.21671102185 € | 156.03 € |
| Redis-g1.2-Medium Single Instance-EU01 | 1 | 20 | per hour | 0.12297879557 € | 88.54 € |
| Redis-c1.2-Small Single Instance-EU01 | 1 | 10 | per hour | 0.11513393325 € | 82.90 € |
| Redis-1.4.10-Single-EU01 | 1 | 10 | per hour | 0.09995833333 € | 71.97 € |

All prices indicated are net list prices plus applicable taxes and duties. We reserve the right to amend or modify the price list at any time. The services will be invoiced to the originating cost centers per billing unit or part thereof. Per-month price indications are projected in all instances based on a hypothetical subscription period of 720 hours (30-day month). This price list shall not be construed as a legally binding offer on the part of Schwarz IT KG. Any individual agreement entered into is subject exclusively to the terms agreed by the Customer and Schwarz IT KG and the prices for the relevant service applicable as of the date on which the individual agreement is entered into.

| | | | | | |
|-----------------------------|---|-----|----------|-----------------|------------|
| Redis-2.8.50-Single-EU01 | 1 | 50 | per hour | 0.16406944444 € | 118.13 € |
| Redis-1.2.10-Replica-EU01 | 3 | 10 | per hour | 0.20056944444 € | 144.41 € |
| Redis-1.4.10-Replica-EU01 | 3 | 10 | per hour | 0.21752777778 € | 156.62 € |
| Redis-1.4.50-Replica-EU01 | 3 | 50 | per hour | 0.25915277778 € | 186.59 € |
| Redis-2.8.10-Replica-EU01 | 3 | 10 | per hour | 0.37780555556 € | 272.02 € |
| Redis-2.8.50-Replica-EU01 | 3 | 50 | per hour | 0.41944444444 € | 302.00 € |
| Redis-2.8.100-Replica-EU01 | 3 | 100 | per hour | 0.47147222222 € | 339.46 € |
| Redis-2.8.250-Replica-EU01 | 3 | 250 | per hour | 0.62756944444 € | 451.85 € |
| Redis-4.16.50-Replica-EU01 | 3 | 50 | per hour | 0.78058333333 € | 562.02 € |
| Redis-4.16.100-Replica-EU01 | 3 | 100 | per hour | 0.83261111111 € | 599.48 € |
| Redis-4.16.250-Replica-EU01 | 3 | 250 | per hour | 0.98872222222 € | 711.88 € |
| Redis-8.32.100-Replica-EU01 | 3 | 100 | per hour | 1.56116666667 € | 1,124.04 € |
| Redis-8.32.250-Replica-EU01 | 3 | 250 | per hour | 1.71726388889 € | 1,236.43 € |

Redis - High Performance

| | | | | | |
|------------------------------------|---|-----|----------|-----------------|------------|
| Redis-2.8.250-Replica-HiPerf-EU01 | 3 | 250 | per hour | 0.74680763889 € | 537.70 € |
| Redis-4.16.250-Replica-HiPerf-EU01 | 3 | 250 | per hour | 1.17657944444 € | 847.14 € |
| Redis-8.32.250-Replica-HiPerf-EU01 | 3 | 250 | per hour | 2.04354402778 € | 1,471.35 € |

MongoDB

| | | | | | |
|---|---|-----|----------|-----------------|------------|
| MongoDB-g1.5-Extra Extra Large Replica-EU01 | 3 | 320 | per hour | 9.42451525822 € | 6,785.65 € |
| MongoDB-g1.4-Extra Large Replica-EU01 | 3 | 160 | per hour | 4.79280563941 € | 3,450.82 € |
| MongoDB-g1.3-Large Replica-EU01 | 3 | 80 | per hour | 2.47695083000 € | 1,783.40 € |
| MongoDB-g1.2-Medium Replica-EU01 | 3 | 40 | per hour | 1.31902342530 € | 949.70 € |
| MongoDB-g1.1-Small Replica-EU01 | 3 | 20 | per hour | 0.74005972295 € | 532.84 € |
| MongoDB-c1.1-Nano Replica-EU01 | 3 | 10 | per hour | 0.45596538229 € | 328.30 € |
| MongoDB-g1.1-Small Single Instance-EU01 | 1 | 20 | per hour | 0.36268376814 € | 261.13 € |
| MongoDB-t1.2-Nano Single Instance-EU01 | 1 | 10 | per hour | 0.21789743338 € | 156.89 € |

MongoDB Flex

| | | | | | |
|--------------------------------|---|---|----------|-----------------|------------|
| MongoDB-Flex-1.1-Single-EU01 | 1 | * | per hour | 0.08710525554 € | 62.72 € |
| MongoDB-Flex-1.2-Single-EU01 | 1 | * | per hour | 0.12468821989 € | 89.78 € |
| MongoDB-Flex-1.4-Single-EU01 | 1 | * | per hour | 0.23370612167 € | 168.27 € |
| MongoDB-Flex-1.1-Replica-EU01 | 3 | * | per hour | 0.20547093623 € | 147.94 € |
| MongoDB-Flex-1.2-Replica-EU01 | 3 | * | per hour | 0.34261298652 € | 246.68 € |
| MongoDB-Flex-1.4-Replica-EU01 | 3 | * | per hour | 0.58605223274 € | 421.96 € |
| MongoDB-Flex-1.8-Replica-EU01 | 3 | * | per hour | 1.10719202383 € | 797.18 € |
| MongoDB-Flex-2.4-Replica-EU01 | 3 | * | per hour | 0.71823926837 € | 517.13 € |
| MongoDB-Flex-2.8-Replica-EU01 | 3 | * | per hour | 1.23260559959 € | 887.48 € |
| MongoDB-Flex-2.16-Replica-EU01 | 3 | * | per hour | 2.21325490179 € | 1,593.54 € |

* The storage can be flexibly booked as required. Pricing is for MongoDB Flex and PostgreSQL Flex services on page 9 and 10.

All prices indicated are net list prices plus applicable taxes and duties. We reserve the right to amend or modify the price list at any time. The services will be invoiced to the originating cost centers per billing unit or part thereof. Per-month price indications are projected in all instances based on a hypothetical subscription period of 720 hours (30-day month). This price list shall not be construed as a legally binding offer on the part of Schwarz IT KG. Any individual agreement entered into is subject exclusively to the terms agreed by the Customer and Schwarz IT KG and the prices for the relevant service applicable as of the date on which the individual agreement is entered into.

| | | | | | |
|---------------------------------|---|---|----------|------------------|-------------|
| MongoDB-Flex-4.8-Replica-EU01 | 3 | * | per hour | 1.43523053340 € | 1,033.37 € |
| MongoDB-Flex-4.16-Replica-EU01 | 3 | * | per hour | 2.46402262459 € | 1,774.10 € |
| MongoDB-Flex-4.32-Replica-EU01 | 3 | * | per hour | 4.42538065772 € | 3,186.27 € |
| MongoDB-Flex-8.16-Replica-EU01 | 3 | * | per hour | 2.86921306348 € | 2,065.83 € |
| MongoDB-Flex-8.32-Replica-EU01 | 3 | * | per hour | 4.92685667457 € | 3,547.34 € |
| MongoDB-Flex-8.64-Replica-EU01 | 3 | * | per hour | 8.84963216957 € | 6,371.74 € |
| MongoDB-Flex-16.32-Replica-EU01 | 3 | * | per hour | 5.47554098273 € | 3,942.39 € |
| MongoDB-Flex-16.64-Replica-EU01 | 3 | * | per hour | 10.08351387237 € | 7,260.13 € |
| MongoDB-Flex-4.32-Sharded-EU01 | 9 | * | per hour | 12.94243410845 € | 9,318.55 € |
| MongoDB-Flex-8.32-Sharded-EU01 | 9 | * | per hour | 14.39053255526 € | 10,361.18 € |
| MongoDB-Flex-8.64-Sharded-EU01 | 9 | * | per hour | 25.88373907104 € | 18,636.29 € |
| MongoDB-Flex-16.32-Sharded-EU01 | 9 | * | per hour | 15.93567493926 € | 11,473.69 € |
| MongoDB-Flex-16.64-Sharded-EU01 | 9 | * | per hour | 29.43395894001 € | 21,192.45 € |

PostgreSQL until version 11

| | | | | | |
|---|---|-----|----------|-----------------|----------|
| PostgreSQL-c1.5-Extra Large Replica-EU01 | 3 | 500 | per hour | 0.75502559924 € | 543.62 € |
| PostgreSQL-g1.3-Large Replica-EU01 | 3 | 100 | per hour | 0.41421986563 € | 298.24 € |
| PostgreSQL-g1.2-Medium Replica-EU01 | 3 | 50 | per hour | 0.29292312923 € | 210.90 € |
| PostgreSQL-c1.2-Small Replica-EU01 | 3 | 10 | per hour | 0.21671102185 € | 156.03 € |
| PostgreSQL-g1.2-Medium Single Instance-EU01 | 1 | 50 | per hour | 0.12623899372 € | 90.89 € |
| PostgreSQL-c1.2-Small Single Instance-EU01 | 1 | 10 | per hour | 0.11513393325 € | 82.90 € |

PostgreSQL version 11 and 13

| | | | | | |
|---------------------------------|---|-----|----------|-----------------|----------|
| PostgreSQL-1.4.10-Single-EU01 | 1 | 10 | per hour | 0.09967472587 € | 71.77 € |
| PostgreSQL-2.4.10-Single-EU01 | 1 | 10 | per hour | 0.14213888889 € | 102.34 € |
| PostgreSQL-2.8.50-Single-EU01 | 1 | 50 | per hour | 0.15617767845 € | 112.45 € |
| PostgreSQL-4.8.50-Single-EU01 | 1 | 50 | per hour | 0.27263055556 € | 196.29 € |
| PostgreSQL-1.2.10-Replica-EU01 | 3 | 10 | per hour | 0.17068146436 € | 122.89 € |
| PostgreSQL-1.4.10-Replica-EU01 | 3 | 10 | per hour | 0.17935143326 € | 129.13 € |
| PostgreSQL-1.4.50-Replica-EU01 | 3 | 50 | per hour | 0.20650972862 € | 148.69 € |
| PostgreSQL-2.4.10-Replica-EU01 | 3 | 10 | per hour | 0.24947222222 € | 179.62 € |
| PostgreSQL-2.4.50-Replica-EU01 | 3 | 50 | per hour | 0.26012194444 € | 187.29 € |
| PostgreSQL-2.8.10-Replica-EU01 | 3 | 10 | per hour | 0.31008833333 € | 223.26 € |
| PostgreSQL-2.8.50-Replica-EU01 | 3 | 50 | per hour | 0.34965583333 € | 251.75 € |
| PostgreSQL-2.8.100-Replica-EU01 | 3 | 100 | per hour | 0.39937722222 € | 287.55 € |
| PostgreSQL-2.8.250-Replica-EU01 | 3 | 250 | per hour | 0.53397750000 € | 384.46 € |
| PostgreSQL-4.8.10-Replica-EU01 | 3 | 10 | per hour | 0.42586111111 € | 306.62 € |
| PostgreSQL-4.8.50-Replica-EU01 | 3 | 50 | per hour | 0.45176638889 € | 325.27 € |
| PostgreSQL-4.8.100-Replica-EU01 | 3 | 100 | per hour | 0.52023027778 € | 374.57 € |

* The storage can be flexibly booked as required. Pricing is for MongoDB Flex and PostgreSQL Flex services on page 9 and 10.

All prices indicated are net list prices plus applicable taxes and duties. We reserve the right to amend or modify the price list at any time. The services will be invoiced to the originating cost centers per billing unit or part thereof. Per-month price indications are projected in all instances based on a hypothetical subscription period of 720 hours (30-day month). This price list shall not be construed as a legally binding offer on the part of Schwarz IT KG. Any individual agreement entered into is subject exclusively to the terms agreed by the Customer and Schwarz IT KG and the prices for the relevant service applicable as of the date on which the individual agreement is entered into.

| | | | | | |
|--|---|------|----------|-----------------|------------|
| PostgreSQL-4.8.250-Replica-EU01 | 3 | 250 | per hour | 0.66024777778 € | 475.38 € |
| PostgreSQL-4.16.50-Replica-EU01 | 3 | 50 | per hour | 0.64994416667 € | 467.96 € |
| PostgreSQL-4.16.100-Replica-EU01 | 3 | 100 | per hour | 0.69954305556 € | 503.67 € |
| PostgreSQL-4.16.250-Replica-EU01 | 3 | 250 | per hour | 0.84836694444 € | 610.82 € |
| PostgreSQL-4.16.500-Replica-EU01 | 3 | 500 | per hour | 1.06794138889 € | 768.92 € |
| PostgreSQL-8.16.50-Replica-EU01 | 3 | 50 | per hour | 0.83417055556 € | 600.60 € |
| PostgreSQL-8.16.100-Replica-EU01 | 3 | 100 | per hour | 0.90263444444 € | 649.90 € |
| PostgreSQL-8.16.250-Replica-EU01 | 3 | 250 | per hour | 1.10802611111 € | 797.78 € |
| PostgreSQL-8.16.500-Replica-EU01 | 3 | 500 | per hour | 1.31993750000 € | 950.36 € |
| PostgreSQL-8.32.100-Replica-EU01 | 3 | 100 | per hour | 1.29987472222 € | 935.91 € |
| PostgreSQL-8.32.250-Replica-EU01 | 3 | 250 | per hour | 1.44869861111 € | 1,043.06 € |
| PostgreSQL-8.32.500-Replica-EU01 | 3 | 500 | per hour | 1.69673388889 € | 1,221.65 € |
| PostgreSQL-8.32.1000-Replica-EU01 | 3 | 1000 | per hour | 2.13498444444 € | 1,537.19 € |
| PostgreSQL-16.32.100-Replica-EU01 | 3 | 100 | per hour | 1.66923944444 € | 1,201.85 € |
| PostgreSQL-16.32.250-Replica-EU01 | 3 | 250 | per hour | 1.87463111111 € | 1,349.73 € |
| PostgreSQL-16.32.500-Replica-EU01 | 3 | 500 | per hour | 2.21695055556 € | 1,596.20 € |
| PostgreSQL-16.32.1000-Replica-EU01 | 3 | 1000 | per hour | 2.63892222222 € | 1,900.02 € |
| PostgreSQL-16.64.500-Replica-EU01 | 3 | 500 | per hour | 2.89739722222 € | 2,086.13 € |
| PostgreSQL-16.64.1000-Replica-EU01 | 3 | 1000 | per hour | 3.39346777778 € | 2,443.30 € |
| PostgreSQL Flex | | | | | |
| PostgreSQL-Flex-2.4-Single-EU01 | 1 | * | per hour | 0.12598444444 € | 90.71 € |
| PostgreSQL-Flex-4.8-Single-EU01 | 1 | * | per hour | 0.23402944444 € | 168.50 € |
| PostgreSQL-Flex-8.16-Single-EU01 | 1 | * | per hour | 0.46804527778 € | 336.99 € |
| PostgreSQL-Flex-16.32-Single-EU01 | 1 | * | per hour | 0.93610416667 € | 674.00 € |
| PostgreSQL-Flex-2.16-Single-EU01 | 1 | * | per hour | 0.28596944444 € | 205.90 € |
| PostgreSQL-Flex-4.32-Single-EU01 | 1 | * | per hour | 0.62612472222 € | 450.81 € |
| PostgreSQL-Flex-16.128-Single-EU01 | 1 | * | per hour | 2.34220000000 € | 1,686.38 € |
| PostgreSQL-Flex-2.4-Replica-EU01 | 3 | * | per hour | 0.19708888889 € | 141.90 € |
| PostgreSQL-Flex-4.8-Replica-EU01 | 3 | * | per hour | 0.37743611111 € | 271.75 € |
| PostgreSQL-Flex-8.16-Replica-EU01 | 3 | * | per hour | 0.75488583333 € | 543.52 € |
| PostgreSQL-Flex-16.32-Replica-EU01 | 3 | * | per hour | 1.50977166667 € | 1,087.04 € |
| PostgreSQL-Flex-2.16-Replica-EU01 | 3 | * | per hour | 0.57192527778 € | 411.79 € |
| PostgreSQL-Flex-4.32-Replica-EU01 | 3 | * | per hour | 1.25440000000 € | 903.17 € |
| PostgreSQL-Flex-16.128-Replica-EU01 | 3 | * | per hour | 4.68440000000 € | 3,372.77 € |
| PostgreSQL - High Performance | | | | | |
| PostgreSQL-4.8.250-Replica-HiPerf-EU01 | 3 | 250 | per hour | 0.78569750000 € | 565,70 € |

* The storage can be flexibly booked as required. Pricing is for MongoDB Flex and PostgreSQL Flex services on page 9 and 10.

All prices indicated are net list prices plus applicable taxes and duties. We reserve the right to amend or modify the price list at any time. The services will be invoiced to the originating cost centers per billing unit or part thereof. Per-month price indications are projected in all instances based on a hypothetical subscription period of 720 hours (30-day month). This price list shall not be construed as a legally binding offer on the part of Schwarz IT KG. Any individual agreement entered into is subject exclusively to the terms agreed by the Customer and Schwarz IT KG and the prices for the relevant service applicable as of the date on which the individual agreement is entered into.

| | | | | | |
|--|---|------|----------|-----------------|------------|
| PostgreSQL-8.16.500-Replica-HiPerf-EU01 | 3 | 500 | per hour | 1.57073388889 € | 1,130.93 € |
| PostgreSQL-16.32.1000-Replica-HiPerf-EU01 | 3 | 1000 | per hour | 3.14031083333 € | 2,261.02 € |
| PostgreSQL-4.16.500-Replica-HiPerf-EU01 | 3 | 500 | per hour | 1.27085388889 € | 915.01 € |
| PostgreSQL-8.32.1000-Replica-HiPerf-EU01 | 3 | 1000 | per hour | 2.54063347222 € | 1,829.26 € |
| PostgreSQL-16.64.1000-Replica-HiPerf-EU01 | 3 | 1000 | per hour | 4.03823194444 € | 2,907.53 € |
| Elasticsearch until version 7 | | | | | |
| Elasticsearch-g1.3-Large Replica-EU01 | 3 | 100 | per hour | 0.41421986563 € | 298.24 € |
| Elasticsearch-g1.2-Medium Replica-EU01 | 3 | 50 | per hour | 0.29292312923 € | 210.90 € |
| Elasticsearch-c1.2-Small Replica-EU01 | 3 | 10 | per hour | 0.21671102185 € | 156.03 € |
| Elasticsearch-g1.2-Medium Single Instance-EU01 | 1 | 50 | per hour | 0.12623899372 € | 90.89 € |
| Elasticsearch-c1.2-Small Single Instance-EU01 | 1 | 10 | per hour | 0.11513393325 € | 82.90 € |
| Elasticsearch-1.4.10-Single-EU01 | 1 | 10 | per hour | 0.09995833333 € | 71.97 € |
| Elasticsearch-2.4.10-Single-EU01 | 1 | 10 | per hour | 0.12106944444 € | 87.17 € |
| Elasticsearch-2.8.50-Single-EU01 | 1 | 50 | per hour | 0.15673611111 € | 112.85 € |
| Elasticsearch-4.8.50-Single-EU01 | 1 | 50 | per hour | 0.19038888889 € | 137.08 € |
| Elasticsearch-1.2.10-Replica-EU01 | 3 | 10 | per hour | 0.20056944444 € | 144.41 € |
| Elasticsearch-1.4.10-Replica-EU01 | 3 | 10 | per hour | 0.21070833333 € | 151.71 € |
| Elasticsearch-1.4.50-Replica-EU01 | 3 | 50 | per hour | 0.24448611111 € | 176.03 € |
| Elasticsearch-2.4.10-Replica-EU01 | 3 | 10 | per hour | 0.33259722222 € | 239.47 € |
| Elasticsearch-2.4.50-Replica-EU01 | 3 | 50 | per hour | 0.38331944444 € | 275.99 € |
| Elasticsearch-2.8.10-Replica-EU01 | 3 | 10 | per hour | 0.33255555556 € | 239.44 € |
| Elasticsearch-2.8.50-Replica-EU01 | 3 | 50 | per hour | 0.37900000000 € | 272.88 € |
| Elasticsearch-2.8.100-Replica-EU01 | 3 | 100 | per hour | 0.43706944444 € | 314.69 € |
| Elasticsearch-2.8.250-Replica-EU01 | 3 | 250 | per hour | 0.61127777778 € | 440.12 € |
| Elasticsearch-4.8.10-Replica-EU01 | 3 | 10 | per hour | 0.44626388889 € | 321.31 € |
| Elasticsearch-4.8.50-Replica-EU01 | 3 | 50 | per hour | 0.50351388889 € | 362.53 € |
| Elasticsearch-4.8.100-Replica-EU01 | 3 | 100 | per hour | 0.57505555556 € | 414.04 € |
| Elasticsearch-4.8.250-Replica-EU01 | 3 | 250 | per hour | 0.78970833333 € | 568.59 € |
| Elasticsearch-4.16.50-Replica-EU01 | 3 | 50 | per hour | 0.57223611111 € | 412.01 € |
| Elasticsearch-4.16.100-Replica-EU01 | 3 | 100 | per hour | 0.64377777778 € | 463.52 € |
| Elasticsearch-4.16.250-Replica-EU01 | 3 | 250 | per hour | 0.85843055556 € | 618.07 € |
| Elasticsearch-4.16.500-Replica-EU01 | 3 | 500 | per hour | 1.21616666667 € | 875.64 € |
| Elasticsearch-8.16.50-Replica-EU01 | 3 | 50 | per hour | 0.85140277778 € | 613.01 € |
| Elasticsearch-8.16.100-Replica-EU01 | 3 | 100 | per hour | 0.94580555556 € | 680.98 € |
| Elasticsearch-8.16.250-Replica-EU01 | 3 | 250 | per hour | 1.22902777778 € | 884.90 € |
| Elasticsearch-8.16.500-Replica-EU01 | 3 | 500 | per hour | 1.70104166667 € | 1,224.75 € |
| Elasticsearch-8.32.100-Replica-EU01 | 3 | 100 | per hour | 1.12716666667 € | 811.56 € |

All prices indicated are net list prices plus applicable taxes and duties. We reserve the right to amend or modify the price list at any time. The services will be invoiced to the originating cost centers per billing unit or part thereof. Per-month price indications are projected in all instances based on a hypothetical subscription period of 720 hours (30-day month). This price list shall not be construed as a legally binding offer on the part of Schwarz IT KG. Any individual agreement entered into is subject exclusively to the terms agreed by the Customer and Schwarz IT KG and the prices for the relevant service applicable as of the date on which the individual agreement is entered into.

| | | | | | |
|---------------------------------------|---|------|----------|-----------------|------------|
| Elasticsearch-8.32.250-Replica-EU01 | 3 | 250 | per hour | 1.41037500000 € | 1,015.47 € |
| Elasticsearch-8.32.500-Replica-EU01 | 3 | 500 | per hour | 1.88240277778 € | 1,355.33 € |
| Elasticsearch-8.32.1000-Replica-EU01 | 3 | 1000 | per hour | 2.82643055556 € | 2,035.03 € |
| Elasticsearch-16.32.100-Replica-EU01 | 3 | 100 | per hour | 1.49204166667 € | 1,074.27 € |
| Elasticsearch-16.32.250-Replica-EU01 | 3 | 250 | per hour | 2.11468055556 € | 1,522.57 € |
| Elasticsearch-16.32.500-Replica-EU01 | 3 | 500 | per hour | 2.73731944444 € | 1,970.87 € |
| Elasticsearch-16.32.1000-Replica-EU01 | 3 | 1000 | per hour | 3.98259722222 € | 2,867.47 € |
| Elasticsearch-16.64.500-Replica-EU01 | 3 | 500 | per hour | 3.21576388889 € | 2,315.35 € |
| Elasticsearch-16.64.1000-Replica-EU01 | 3 | 1000 | per hour | 4.46104166667 € | 3,211.95 € |

OpenSearch

| | | | | | |
|----------------------------------|---|-----|----------|-----------------|------------|
| OpenSearch-1.4.10-Single-EU01 | 1 | 10 | per hour | 0.09995833333 € | 71.97 € |
| OpenSearch-2.4.10-Single-EU01 | 1 | 10 | per hour | 0.12106944444 € | 87.17 € |
| OpenSearch-2.8.50-Single-EU01 | 1 | 50 | per hour | 0.15673611111 € | 112.85 € |
| OpenSearch-4.8.50-Single-EU01 | 1 | 50 | per hour | 0.19038888889 € | 137.08 € |
| OpenSearch-1.2.10-Replica-EU01 | 3 | 10 | per hour | 0.20056944444 € | 144.41 € |
| OpenSearch-1.4.10-Replica-EU01 | 3 | 10 | per hour | 0.21070833333 € | 151.71 € |
| OpenSearch-1.4.50-Replica-EU01 | 3 | 50 | per hour | 0.24448611111 € | 176.03 € |
| OpenSearch-2.4.10-Replica-EU01 | 3 | 10 | per hour | 0.33259722222 € | 239.47 € |
| OpenSearch-2.4.50-Replica-EU01 | 3 | 50 | per hour | 0.38331944444 € | 275.99 € |
| OpenSearch-2.8.10-Replica-EU01 | 3 | 10 | per hour | 0.33255555556 € | 239.44 € |
| OpenSearch-2.8.50-Replica-EU01 | 3 | 50 | per hour | 0.37900000000 € | 272.88 € |
| OpenSearch-2.8.100-Replica-EU01 | 3 | 100 | per hour | 0.43706944444 € | 314.69 € |
| OpenSearch-2.8.250-Replica-EU01 | 3 | 250 | per hour | 0.61127777778 € | 440.12 € |
| OpenSearch-4.8.10-Replica-EU01 | 3 | 10 | per hour | 0.44626388889 € | 321.31 € |
| OpenSearch-4.8.50-Replica-EU01 | 3 | 50 | per hour | 0.50351388889 € | 362.53 € |
| OpenSearch-4.8.100-Replica-EU01 | 3 | 100 | per hour | 0.57505555556 € | 414.04 € |
| OpenSearch-4.8.250-Replica-EU01 | 3 | 250 | per hour | 0.78970833333 € | 568.59 € |
| OpenSearch-4.16.50-Replica-EU01 | 3 | 50 | per hour | 0.57223611111 € | 412.01 € |
| OpenSearch-4.16.100-Replica-EU01 | 3 | 100 | per hour | 0.64377777778 € | 463.52 € |
| OpenSearch-4.16.250-Replica-EU01 | 3 | 250 | per hour | 0.85843055556 € | 618.07 € |
| OpenSearch-4.16.500-Replica-EU01 | 3 | 500 | per hour | 1.21616666667 € | 875.64 € |
| OpenSearch-8.16.50-Replica-EU01 | 3 | 50 | per hour | 0.85140277778 € | 613.01 € |
| OpenSearch-8.16.100-Replica-EU01 | 3 | 100 | per hour | 0.94580555556 € | 680.98 € |
| OpenSearch-8.16.250-Replica-EU01 | 3 | 250 | per hour | 1.22902777778 € | 884.90 € |
| OpenSearch-8.16.500-Replica-EU01 | 3 | 500 | per hour | 1.70104166667 € | 1,224.75 € |
| OpenSearch-8.32.100-Replica-EU01 | 3 | 100 | per hour | 1.12716666667 € | 811.56 € |
| OpenSearch-8.32.250-Replica-EU01 | 3 | 250 | per hour | 1.41037500000 € | 1,015.47 € |

All prices indicated are net list prices plus applicable taxes and duties. We reserve the right to amend or modify the price list at any time. The services will be invoiced to the originating cost centers per billing unit or part thereof. Per-month price indications are projected in all instances based on a hypothetical subscription period of 720 hours (30-day month). This price list shall not be construed as a legally binding offer on the part of Schwarz IT KG. Any individual agreement entered into is subject exclusively to the terms agreed by the Customer and Schwarz IT KG and the prices for the relevant service applicable as of the date on which the individual agreement is entered into.

| | | | | | |
|------------------------------------|---|------|----------|-----------------|------------|
| OpenSearch-8.32.500-Replica-EU01 | 3 | 500 | per hour | 1.88240277778 € | 1,355.33 € |
| OpenSearch-8.32.1000-Replica-EU01 | 3 | 1000 | per hour | 2.82643055556 € | 2,035.03 € |
| OpenSearch-16.32.100-Replica-EU01 | 3 | 100 | per hour | 1.49204166667 € | 1,074.27 € |
| OpenSearch-16.32.250-Replica-EU01 | 3 | 250 | per hour | 2.11468055556 € | 1,522.57 € |
| OpenSearch-16.32.500-Replica-EU01 | 3 | 500 | per hour | 2.73731944444 € | 1,970.87 € |
| OpenSearch-16.32.1000-Replica-EU01 | 3 | 1000 | per hour | 3.98259722222 € | 2,867.47 € |
| OpenSearch-16.64.500-Replica-EU01 | 3 | 500 | per hour | 3.21576388889 € | 2,315.35 € |
| OpenSearch-16.64.1000-Replica-EU01 | 3 | 1000 | per hour | 4.46104166667 € | 3,211.95 € |

OpenSearch - High Performance

| | | | | | |
|---|---|------|----------|-----------------|------------|
| OpenSearch-4.8.250-Replica-HiPerf-EU01 | 3 | 250 | per hour | 0.93975291667 € | 676.62 € |
| OpenSearch-8.16.500-Replica-HiPerf-EU01 | 3 | 500 | per hour | 2.02423958333 € | 1,457.45 € |
| OpenSearch-16.32.1000-Replica-HiPerf-EU01 | 3 | 1000 | per hour | 4.73929069444 € | 3,412.29 € |
| OpenSearch-4.16.500-Replica-HiPerf-EU01 | 3 | 500 | per hour | 1.44723833333 € | 1,042.01 € |
| OpenSearch-8.32.1000-Replica-HiPerf-EU01 | 3 | 1000 | per hour | 3.36345236111 € | 2,421.69 € |
| OpenSearch-16.64.1000-Replica-HiPerf-EU01 | 3 | 1000 | per hour | 5.30863958333 € | 3,822.22 € |

Messaging

| SERVICE (TYP) | NUMBER OF NODES | DISK STORAGE per node (in GB) | BILLING | PRICE PER HOUR | PRICE INDICATION MONTH |
|---|-----------------|-------------------------------|----------|-----------------|------------------------|
| RabbitMQ until version 3.7 | | | | | |
| RabbitMQ-g1.3-Large Replica-EU01 | 3 | 50 | per hour | 0.39791887488 € | 286.50 € |
| RabbitMQ-g1.2-Medium Replica-EU01 | 3 | 20 | per hour | 0.28314253478 € | 203.86 € |
| RabbitMQ-c1.2-Small Replica-EU01 | 3 | 10 | per hour | 0.21671102185 € | 156.03 € |
| RabbitMQ-g1.2-Medium Single Instance-EU01 | 1 | 20 | per hour | 0.12297879557 € | 88.54 € |
| RabbitMQ-c1.2-Small Single Instance-EU01 | 1 | 10 | per hour | 0.11513393325 € | 82.90 € |
| RabbitMQ version 3.7 and 3.10 | | | | | |
| RabbitMQ-2.4.10-Single-EU01 | 1 | 10 | per hour | 0.12106944444 € | 87.17 € |
| RabbitMQ-4.8.50-Single-EU01 | 1 | 50 | per hour | 0.19038888889 € | 137.08 € |
| RabbitMQ-1.2.10-Replica-EU01 | 3 | 10 | per hour | 0.20056944444 € | 144.41 € |
| RabbitMQ-2.4.10-Replica-EU01 | 3 | 10 | per hour | 0.33259722222 € | 239.47 € |
| RabbitMQ-2.4.50-Replica-EU01 | 3 | 50 | per hour | 0.38331944444 € | 275.99 € |
| RabbitMQ-4.8.10-Replica-EU01 | 3 | 10 | per hour | 0.44626388889 € | 321.31 € |
| RabbitMQ-4.8.50-Replica-EU01 | 3 | 50 | per hour | 0.50351388889 € | 362.53 € |
| RabbitMQ-4.8.100-Replica-EU01 | 3 | 100 | per hour | 0.57505555556 € | 414.04 € |
| RabbitMQ-8.16.50-Replica-EU01 | 3 | 50 | per hour | 0.85140277778 € | 613.01 € |
| RabbitMQ-8.16.100-Replica-EU01 | 3 | 100 | per hour | 0.94580555556 € | 680.98 € |

All prices indicated are net list prices plus applicable taxes and duties. We reserve the right to amend or modify the price list at any time. The services will be invoiced to the originating cost centers per billing unit or part thereof. Per-month price indications are projected in all instances based on a hypothetical subscription period of 720 hours (30-day month). This price list shall not be construed as a legally binding offer on the part of Schwarz IT KG. Any individual agreement entered into is subject exclusively to the terms agreed by the Customer and Schwarz IT KG and the prices for the relevant service applicable as of the date on which the individual agreement is entered into.

| | | | | | |
|--|---|-----|----------|-----------------|------------|
| RabbitMQ-16.32.100-Replica-EU01 | 3 | 100 | per hour | 1.49204166667 € | 1,074.27 € |
| RabbitMQ - High Performance | | | | | |
| RabbitMQ-4.8.100-Replica-HiPerf-EU01 | 3 | 100 | per hour | 0.68431611111 € | 492.71 € |
| RabbitMQ-8.16.100-Replica-HiPerf-EU01 | 3 | 100 | per hour | 1.12550861111 € | 810.37 € |
| RabbitMQ-16.32.100-Replica-HiPerf-EU01 | 3 | 100 | per hour | 1.77552958333 € | 1,278.38 € |

Logging & Monitoring

Logging

| SERVICE (TYP) | NUMBER OF NODES | DISK STORAGE per node (in GB) | BILLING | PRICE PER HOUR | PRICE INDICATION MONTH |
|--|-----------------|-------------------------------|----------|-----------------|------------------------|
| LogMe-g1.3-Large Replica-EU01 | 3 | 3000 | per hour | 1.71539302992 € | 1,235.08 € |
| LogMe-g1.2-Medium Replica-EU01 | 3 | 50 | per hour | 0.34284517206 € | 246.85 € |
| LogMe-c1.2-Small Replica-EU01 | 3 | 10 | per hour | 0.26248670999 € | 188.99 € |
| LogMe-g1.2-Medium Single Instance-EU01 | 1 | 50 | per hour | 0.18702836371 € | 134.66 € |
| LogMe-c1.2-Small Single Instance-EU01 | 1 | 4 | per hour | 0.16050501473 € | 115.56 € |
| LogMe-1.4.10-Single-EU01 | 1 | 10 | per hour | 0.20140277778 € | 145.01 € |
| LogMe-2.8.50-Single-EU01 | 1 | 50 | per hour | 0.22301388889 € | 160.57 € |
| LogMe-1.2.50-Replica-EU01 | 3 | 50 | per hour | 0.38086111111 € | 274.22 € |
| LogMe-1.4.50-Replica-EU01 | 3 | 50 | per hour | 0.39100000000 € | 281.52 € |
| LogMe-1.4.100-Replica-EU01 | 3 | 100 | per hour | 0.43322222222 € | 311.92 € |
| LogMe-2.8.50-Replica-EU01 | 3 | 50 | per hour | 0.42205555556 € | 303.88 € |
| LogMe-2.8.100-Replica-EU01 | 3 | 100 | per hour | 0.46426388889 € | 334.27 € |
| LogMe-2.8.250-Replica-EU01 | 3 | 250 | per hour | 0.59091666667 € | 425.46 € |
| LogMe-2.8.500-Replica-EU01 | 3 | 500 | per hour | 0.80200000000 € | 577.44 € |
| LogMe-4.16.100-Replica-EU01 | 3 | 100 | per hour | 0.52637500000 € | 378.99 € |
| LogMe-4.16.250-Replica-EU01 | 3 | 250 | per hour | 0.65301388889 € | 470.17 € |
| LogMe-4.16.500-Replica-EU01 | 3 | 500 | per hour | 0.86409722222 € | 622.15 € |
| LogMe-4.16.1000-Replica-EU01 | 3 | 1000 | per hour | 1.28625000000 € | 926.10 € |
| LogMe-4.16.2500-Replica-EU01 | 3 | 2500 | per hour | 3.11359722222 € | 2,241.79 € |
| LogMe-4.16.5000-Replica-EU01 | 3 | 5000 | per hour | 5.22437500000 € | 3,761.55 € |
| LogMe-8.32.250-Replica-EU01 | 3 | 250 | per hour | 0.77720833333 € | 559.59 € |
| LogMe-8.32.500-Replica-EU01 | 3 | 500 | per hour | 0.98829166667 € | 711.57 € |
| LogMe-8.32.1000-Replica-EU01 | 3 | 1000 | per hour | 1.41044444444 € | 1,015.52 € |
| LogMe-8.32.2500-Replica-EU01 | 3 | 2500 | per hour | 3.23779166667 € | 2,331.21 € |
| LogMe-8.32.5000-Replica-EU01 | 3 | 5000 | per hour | 5.34856944444 € | 3,850.97 € |
| LogMe-16.64.1000-Replica-EU01 | 3 | 1000 | per hour | 1.65884722222 € | 1,194.37 € |

All prices indicated are net list prices plus applicable taxes and duties. We reserve the right to amend or modify the price list at any time. The services will be invoiced to the originating cost centers per billing unit or part thereof. Per-month price indications are projected in all instances based on a hypothetical subscription period of 720 hours (30-day month). This price list shall not be construed as a legally binding offer on the part of Schwarz IT KG. Any individual agreement entered into is subject exclusively to the terms agreed by the Customer and Schwarz IT KG and the prices for the relevant service applicable as of the date on which the individual agreement is entered into.

| | | | | | |
|--------------------------------|---|------|----------|-----------------|------------|
| LogMe-16.64.2500-Replica-EU01 | 3 | 2500 | per hour | 3.48618055556 € | 2,510.05 € |
| LogMe-16.64.5000-Replica-EU01 | 3 | 5000 | per hour | 5.59697222222 € | 4,029.82 € |
| LogMe2-1.4.10-Single-EU01 | 1 | 10 | per hour | 0.20140277778 € | 145.01 € |
| LogMe2-2.8.50-Single-EU01 | 1 | 50 | per hour | 0.22301388889 € | 160.57 € |
| LogMe2-1.2.50-Replica-EU01 | 3 | 50 | per hour | 0.38086111111 € | 274.22 € |
| LogMe2-1.4.50-Replica-EU01 | 3 | 50 | per hour | 0.39100000000 € | 281.52 € |
| LogMe2-1.4.100-Replica-EU01 | 3 | 100 | per hour | 0.43322222222 € | 311.92 € |
| LogMe2-2.8.50-Replica-EU01 | 3 | 50 | per hour | 0.42205555556 € | 303.88 € |
| LogMe2-2.8.100-Replica-EU01 | 3 | 100 | per hour | 0.46426388889 € | 334.27 € |
| LogMe2-2.8.250-Replica-EU01 | 3 | 250 | per hour | 0.59091666667 € | 425.46 € |
| LogMe2-2.8.500-Replica-EU01 | 3 | 500 | per hour | 0.80200000000 € | 577.44 € |
| LogMe2-4.16.100-Replica-EU01 | 3 | 100 | per hour | 0.52637500000 € | 378.99 € |
| LogMe2-4.16.250-Replica-EU01 | 3 | 250 | per hour | 0.65301388889 € | 470.17 € |
| LogMe2-4.16.500-Replica-EU01 | 3 | 500 | per hour | 0.86409722222 € | 622.15 € |
| LogMe2-4.16.1000-Replica-EU01 | 3 | 1000 | per hour | 1.28625000000 € | 926.10 € |
| LogMe2-4.16.2500-Replica-EU01 | 3 | 2500 | per hour | 3.11359722222 € | 2,241.79 € |
| LogMe2-4.16.5000-Replica-EU01 | 3 | 5000 | per hour | 5.22437500000 € | 3,761.55 € |
| LogMe2-8.32.250-Replica-EU01 | 3 | 250 | per hour | 0.77720833333 € | 559.59 € |
| LogMe2-8.32.500-Replica-EU01 | 3 | 500 | per hour | 0.98829166667 € | 711.57 € |
| LogMe2-8.32.1000-Replica-EU01 | 3 | 1000 | per hour | 1.41044444444 € | 1,015.52 € |
| LogMe2-8.32.2500-Replica-EU01 | 3 | 2500 | per hour | 3.23779166667 € | 2,331.21 € |
| LogMe2-8.32.5000-Replica-EU01 | 3 | 5000 | per hour | 5.34856944444 € | 3,850.97 € |
| LogMe2-16.64.1000-Replica-EU01 | 3 | 1000 | per hour | 1.65884722222 € | 1,194.37 € |
| LogMe2-16.64.2500-Replica-EU01 | 3 | 2500 | per hour | 3.48618055556 € | 2,510.05 € |
| LogMe2-16.64.5000-Replica-EU01 | 3 | 5000 | per hour | 5.59697222222 € | 4,029.82 € |

Monitoring

| SERVICE (TYP) | METRIC VALUES PER MINUTE | BILLING | PRICE PER HOUR | PRICE INDICATION MONTH |
|----------------------------|--------------------------|----------|-----------------|------------------------|
| Frontend-Starter-EU01 | - | per hour | 0.02748291983 € | 19.79 € |
| Monitoring-Starter-EU01 | 5000 | per hour | 0.04128357075 € | 29.72 € |
| Monitoring-Basic-EU01 | 30000 | per hour | 0.19816113960 € | 142.68 € |
| Monitoring-Medium-EU01 | 100000 | per hour | 0.49540284899 € | 356.69 € |
| Monitoring-Large-EU01 | 300000 | per hour | 1.23850712247 € | 891.73 € |
| Monitoring-XL-EU01 | 1500000 | per hour | 5.57328205112 € | 4,012.76 € |
| Monitoring-XXL-EU01 | 3000000 | per hour | 9.90805697977 € | 7,133.80 € |
| Observability-Starter-EU01 | 5000 | per hour | 0.09711111111 € | 69.92 € |

All prices indicated are net list prices plus applicable taxes and duties. We reserve the right to amend or modify the price list at any time. The services will be invoiced to the originating cost centers per billing unit or part thereof. Per-month price indications are projected in all instances based on a hypothetical subscription period of 720 hours (30-day month). This price list shall not be construed as a legally binding offer on the part of Schwarz IT KG. Any individual agreement entered into is subject exclusively to the terms agreed by the Customer and Schwarz IT KG and the prices for the relevant service applicable as of the date on which the individual agreement is entered into.

| | | | | |
|---------------------------|--------|----------|------------------|------------|
| Observability-Basic-EU01 | 30000 | per hour | 0.553533333333 € | 398.54 € |
| Observability-Medium-EU01 | 100000 | per hour | 1.752855555556 € | 1,262.06 € |
| Observability-Large-EU01 | 300000 | per hour | 4.995638333333 € | 3,596.86 € |

All prices indicated are net list prices plus applicable taxes and duties. We reserve the right to amend or modify the price list at any time. The services will be invoiced to the originating cost centers per billing unit or part thereof. Per-month price indications are projected in all instances based on a hypothetical subscription period of 720 hours (30-day month). This price list shall not be construed as a legally binding offer on the part of Schwarz IT KG. Any individual agreement entered into is subject exclusively to the terms agreed by the Customer and Schwarz IT KG and the prices for the relevant service applicable as of the date on which the individual agreement is entered into.