

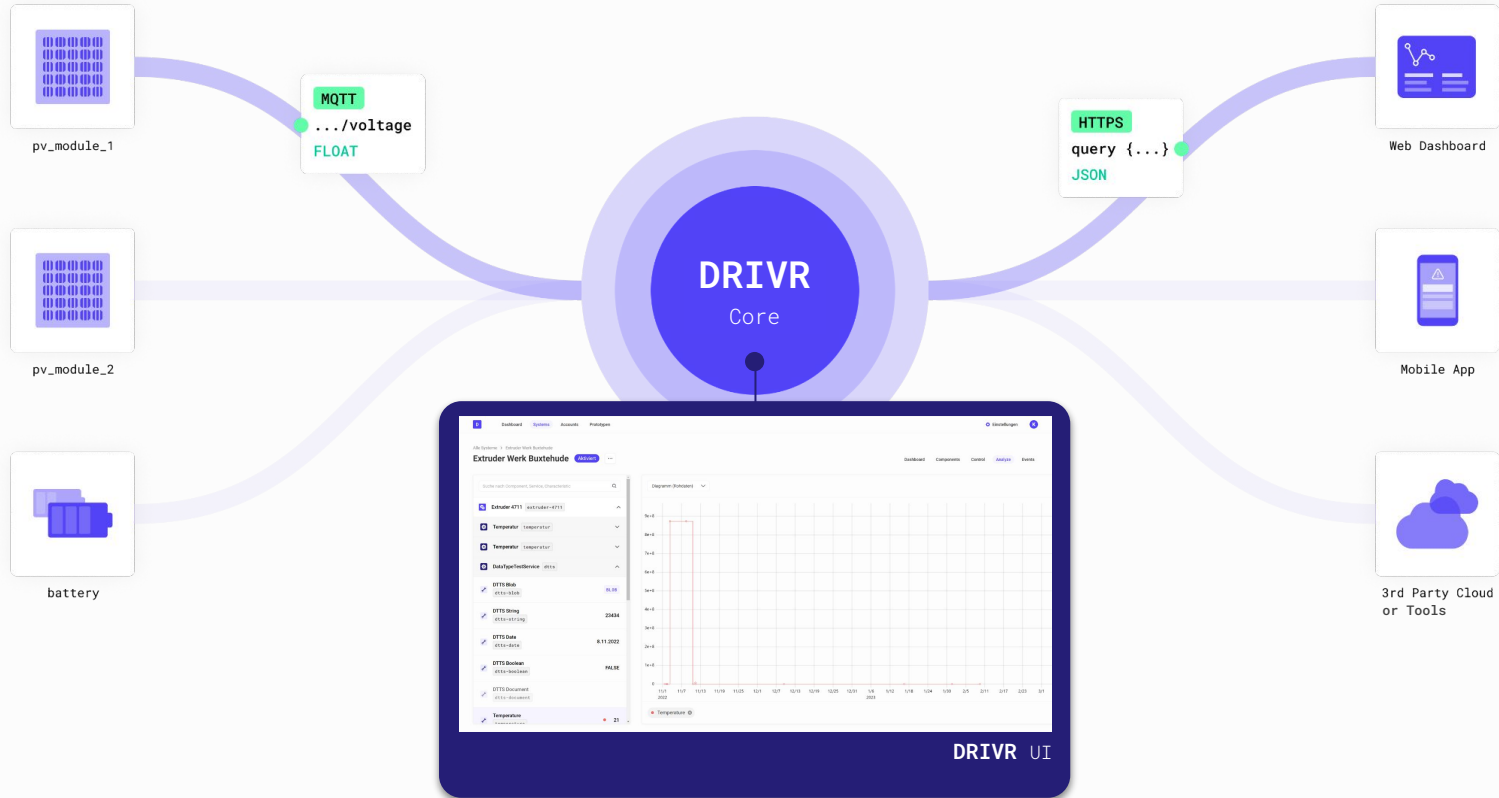
DRIVR.c1oud

Kickstart your IoT

by

XCNT

DRIVR enable efficient IoT and IIoT development.



Discover Our IoT Platform



Benefit from a simple yet powerful GraphQL API and seamless integrations with **Power BI, Tableau, Snowflake**, and more. Deploy anywhere and stay in control of your data.

Crafted by a dedicated team of **18 cloud technology experts in Berlin**, DRIVR embodies reliability and efficiency.

DRIVR is the IoT platform of Centrotec SE, a European group of 1500 employees and 500 Mln Euros in revenues. Today, DRIVR is also ready to scale into more prominent use cases.

DRIVR the best IoT platform for your (I)IoT because:



Flexible and performant technology

(no customization required to fit in your architecture)



Developed and hosted in Germany

or wherever you want (**Digital sovereignty**)



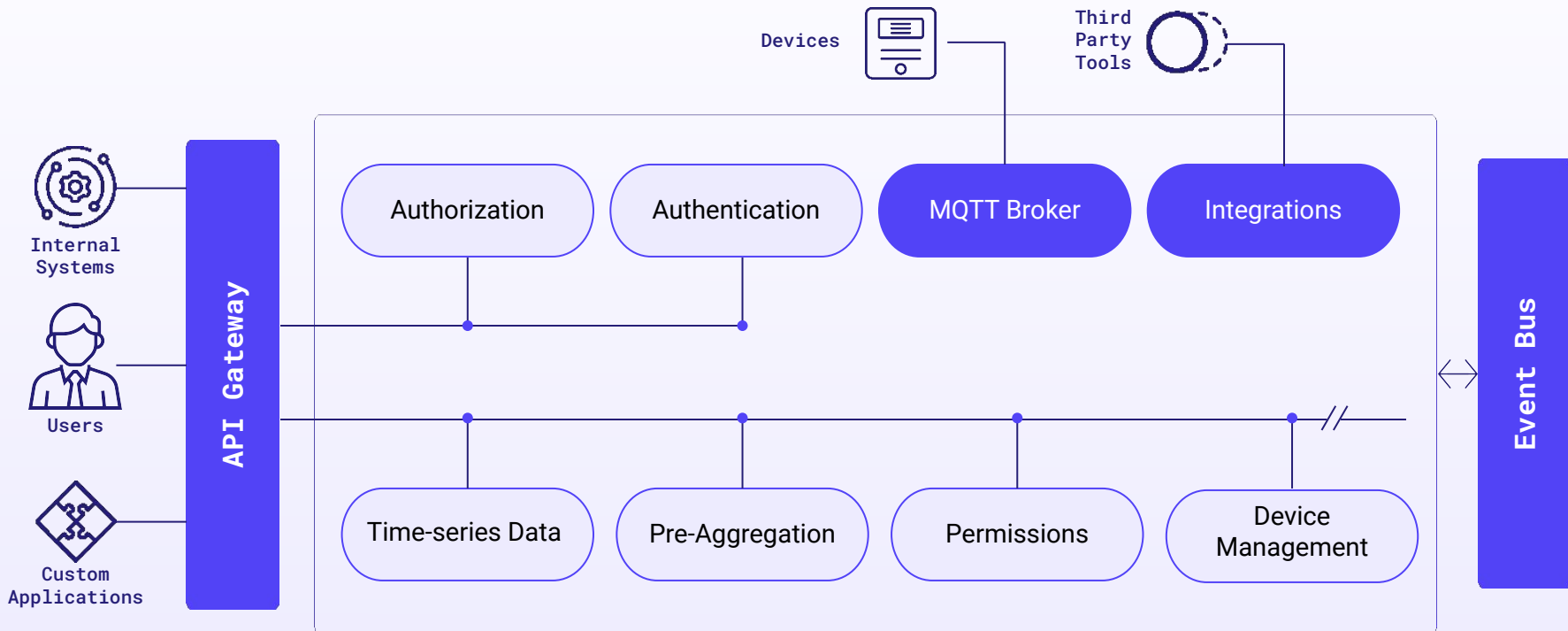
Cheaper than Azure per data point and **fewer customization efforts** (hours)

In Production since 2021

18 Dedicated developers

Family owned

DRIVR Features



We designed DRIVR to be the perfect tool for tackling real-world IoT and IIoT use cases.

#GraphQL

#Integrations

#MQTT

#Permissions

#DeviceManagement

#Timeseries

#GDPR

#DeviceSchema

#UserManagement

#PreAggregation

#AdminUI

#MultiTenant

Proven Technology

With DRIVR, the German OEM of HVAC systems, **WOLF**, has significantly reduced development time and saved infrastructure costs simultaneously.

First launched in 2021, **DRIVR's data throughput has reached 21 million dp/h by Q1 2023.** Wolf uses DRIVR's APIs to develop various internal tools and supplier- or customer-facing applications.



>21.000.000

data points / h

>40.000

connected devices

-70% cost

From Azure

WOLF device management



1

Initial connection

PM6

Developer

Team size

The screenshot displays the WOLF device management interface. The main dashboard shows several key metrics:

- Warmwasser:** Warmwasser Ist: 54,0 °C, Warmwasser Soll: 55,0 °C
- Heizkreis 1:** Vorlauftemperatur: 29,8 °C, Raumtemperatur: 25,8 °C
- Lüftung:** Lüftungsstufe: 1, Lüftdurchsatz Zuluft: 117 m³/h
- Solar:** Gesamtertrag: 16,67 MWh, Kollektortemperatur: 44,0 °C

Below these are two heating device cards, both showing a Kesseltemperatur of 30,6 °C and a Druck Heizkreis of 1,83 bar.

A detailed view of 'Heizgerät 1' is shown on the right, with a search bar and two tabs: 'Functions' and 'HG Parameters'. The 'HG Parameters' tab is active, displaying a list of parameters:

Parameter	Value
Kesseltemperatur	30,6 °C
Rücklauffühler	25,7 °C
Sammlerfühler	31,1 °C
Speicherfühler	54,3 °C
Durchflusssensor	18,5 l/min
Druck Heizkreis	1,83 bar
Zubringer-/Heizkreispumpe	Ein
HZ/WW 3-Wege-Umschaltventil	Heizen
HZ/K 3-Wege-Umschaltventil	Heizen
Verdichterfrequenz	58 Hz
E-Heizung	Aus
Gerätetyp	CHA-07
Betriebsart Heizgerät	Heizbetrieb
Verdichterstatus	Betrieb
Status E-Heizung	AT Abschalta

WOLF serial error detection



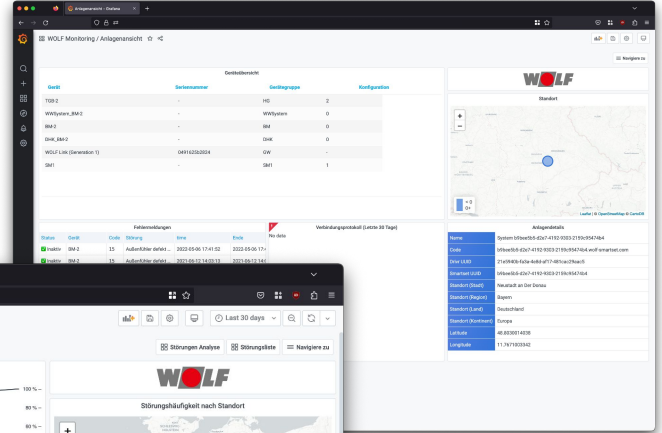
0,5 DM

dev time

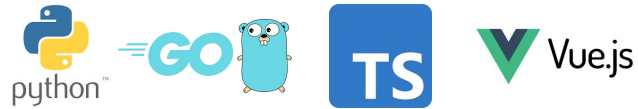
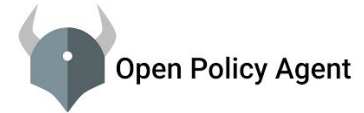


No code

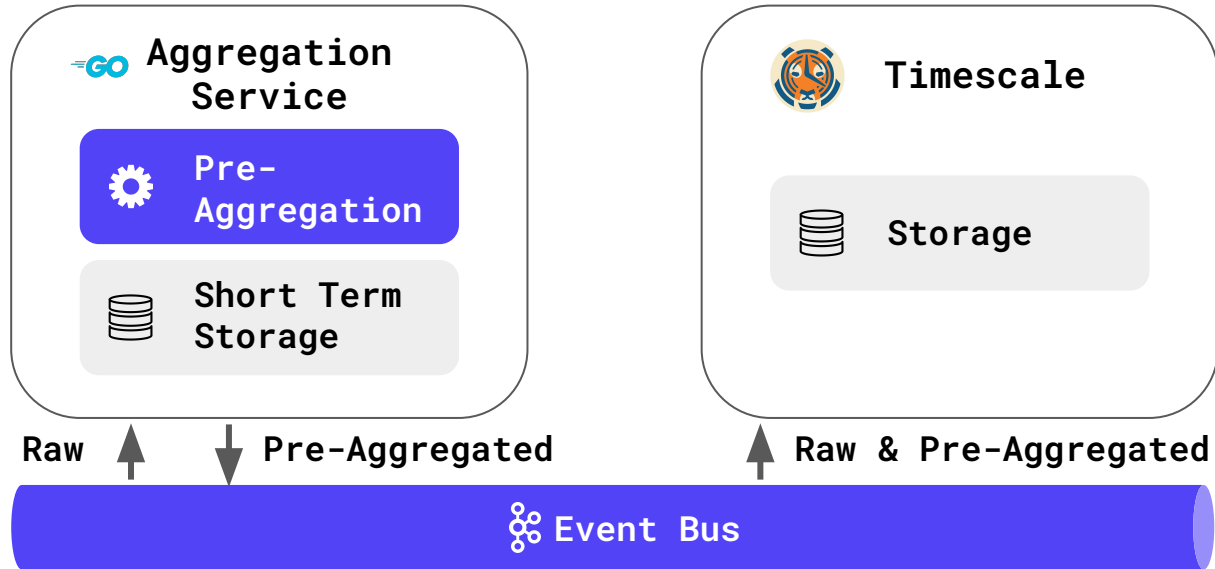
integration



Technology



Technology



Why use **DRIVR**?

GET /**devices**

```
graph TD; A[GET /devices] --> B[GET /owners? device_id={}]; A --> C[GET /time_series? device_id={}]; B --> D[GET /organizations? user_id={}]; C --> E[GET /datapoints? time_series_id={}]
```

GET /**owners?**
device_id={}

GET /**time_series?**
device_id={}

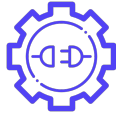
GET /**organizations?**
user_id={}

GET /**datapoints?**
time_series_id={}

GET /**graphql**

```
devices {  
  owner {  
    name  
    organization { name }  
  }  
  timeStreams {  
    datapoints { time value }  
  }  
}
```

Why use **DRIVR**?



Simple and powerful APIs

Saving development time and enabling use cases.



Cloud-agnostic operation

DRIVR fits your Cloud- / IT-Strategy



Third-Party-Integrations included

Use best in market tools to get best insights.



Fixed price per Device per Month

Only dependent on event count and retention time

Predictable Price

You can run **DRIVR** on a shared cluster at one transparent price for maximum predictability or host your own **DRIVR** instance on an Enterprise Plan.

Shared Cluster

Hosted on Azure, StackIT, and others

- ✓ Time-series Data
- ✓ Permission Management
- ✓ Integrations
- ✓ Device Management
- ✓ Events & Alerts

Price per 1.000 data points

0.0128 €

Enterprise

Host anywhere

- ✓ Time-series Data
- ✓ Permission Management
- ✓ Integrations
- ✓ Device Management
- ✓ Events & Alerts

License pricing

on request

Contact us now, and let's start driving innovation together.

Get ahead in the IIoT game today and take the right step towards a more interconnected and efficient future. See firsthand how DRIVR can **reduce costs, boost performance**, and **empower your organization** to develop robust internal tools and applications.

We invite you to reach out for a **customized demo and tailored pricing plans** or to discuss how **DRIVR** can meet your needs. Our experts eagerly await to work with you, helping guide your IIoT transformation with **DRIVR**.

Karl-Heinz Wallwitz
Head of Product

E: karl-heinz.wallwitz@drivr.cloud
T: +49 (0) 160 231 74 73

drivr.cloud



DRIVR

drivr.cloud